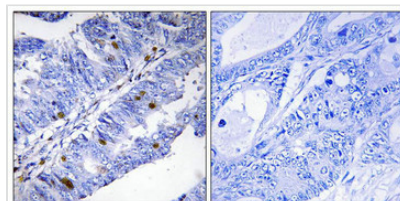




Phospho-NR4A1 (Ser351) Antibody

Product Code	CSB-PA198130
Storage	Upon receipt, store at -20°C or -80°C. Avoid repeated freeze.
Uniprot No.	P22736
Immunogen	Peptide sequence around phosphorylation site of Serine351(L-P-S(p)-K-P) derived from Human Nuclear Receptor NR4A1.
Raised In	Rabbit
Species Reactivity	Human,Mouse,Rat
Specificity	The antibody detects endogenous levels of Nuclear Receptor NR4A1 only when phosphorylated at serine 351
Tested Applications	ELISA,IHC;IHC:1:50-1:100
Form	Rabbit IgG in phosphate buffered saline (without Mg ²⁺ and Ca ²⁺), pH 7.4, 150mM NaCl, 0.02% sodium azide and 50% glycerol.
Purification Method	Antibodies were produced by immunizing rabbits with synthetic phosphopeptide and KLH conjugates. Antibodies were purified by affinity-chromatography using epitope-specific phosphopeptide. Non-phospho specific antibodies were removed by chromatography
Clonality	Polyclonal
Alias	NGFIB; GFRP1; HMR; NR4A1; NAK1
Product Type	Polyclonal Antibody
Immunogen Species	Homo sapiens (Human)
Target Names	NR4A1

Image



Immunohistochemical analysis of paraffin-embedded human colon carcinoma tissue using Nuclear Receptor NR4A1 (Phospho-Ser351) antibody (left) or the same antibody preincubated with blocking peptide (right).

Product Modify	Phospho-Ser351
Usage	For Research Use Only. Not for use in diagnostic or therapeutic procedures.