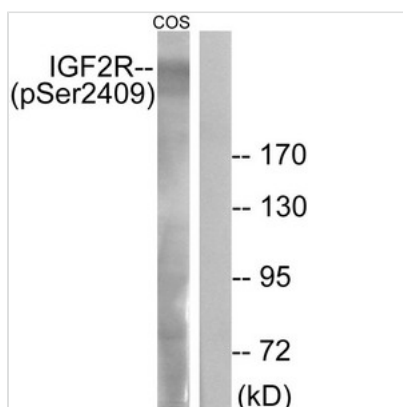




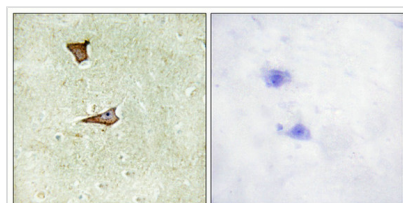
Phospho-IGF2R (Ser2409) Antibody

Product Code	CSB-PA973142
Storage	Upon receipt, store at -20°C or -80°C. Avoid repeated freeze.
Uniprot No.	P11717
Immunogen	Peptide sequence around phosphorylation site of Serine 2409(Q-D-S(p)-E-D) derived from Human IGF2R.
Raised In	Rabbit
Species Reactivity	Human,Mouse
Specificity	The antibody detects endogenous levels of IGF2R only when phosphorylated at serine 2409.
Tested Applications	ELISA,WB,IHC;WB:1:500-1:1000,IHC:1:50-1:100
Form	Rabbit IgG in phosphate buffered saline (without Mg ²⁺ and Ca ²⁺), pH 7.4, 150mM NaCl, 0.02% sodium azide and 50% glycerol.
Purification Method	Antibodies were produced by immunizing rabbits with synthetic phosphopeptide and KLH conjugates. Antibodies were purified by affinity-chromatography using epitope-specific phosphopeptide. Non-phospho specific antibodies were removed by chromatography usi
Clonality	Polyclonal
Alias	CI-MPR; CI-MPR; MPR300; MPRI;
Product Type	Polyclonal Antibody
Immunogen Species	Homo sapiens (Human)
Target Names	IGF2R

Image



Western blot analysis of extracts from COS-7 cells treated with UV using IGF2R (Phospho-Ser2409) Antibody. The lane on the right is treated with the antigen-specific peptide.



Immunohistochemical analysis of paraffin-embedded human brain tissue using IGF2R (Phospho-Ser2409) antibody (left) or the same antibody preincubated with blocking peptide (right).



Product Modify

Phospho-Ser2409

Usage

For Research Use Only. Not for use in diagnostic or therapeutic procedures.