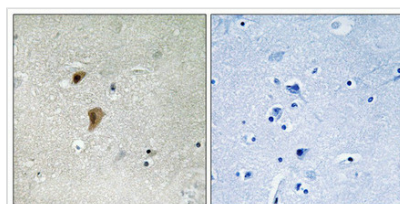




# Phospho-HSF1 (Thr142) Antibody

|                            |  |
|----------------------------|--|
| <b>Product Code</b>        | CSB-PA829409   |
| <b>Storage</b>             | Upon receipt, store at -20°C or -80°C. Avoid repeated freeze.  |
| <b>Uniprot No.</b>         | Q00613   |
| <b>Immunogen</b>           | Peptide sequence around phosphorylation site of threonine 142(L-L-T(p)-D-V) derived from Human HSF1 .  |
| <b>Raised In</b>           | Rabbit   |
| <b>Species Reactivity</b>  | Human,Mouse  |
| <b>Specificity</b>         | The antibody detects endogenous levels of HSF1 only when phosphorylated at threonine 142.  |
| <b>Tested Applications</b> | ELISA,IHC;IHC:1:50-1:100   |
| <b>Form</b>                | Rabbit IgG in phosphate buffered saline (without Mg <sup>2+</sup> and Ca <sup>2+</sup> ), pH 7.4, 150mM NaCl, 0.02% sodium azide and 50% glycerol.   |
| <b>Purification Method</b> | Antibodies were produced by immunizing rabbits with synthetic phosphopeptide and KLH conjugates. Antibodies were purified by affinity-chromatography using epitope-specific phosphopeptide. Non-phospho specific antibodies were removed by chromatography usi |
| <b>Clonality</b>           | Polyclonal   |
| <b>Alias</b>               | HSF 1; HSTF1; Heat shock factor protein 1;   |
| <b>Product Type</b>        | Polyclonal Antibody  |
| <b>Immunogen Species</b>   | Homo sapiens (Human)   |
| <b>Target Names</b>        | HSF1   |

## Image



Immunohistochemical analysis of paraffin-embedded human brain tissue using HSF1 (Phospho-Thr142) antibody (left) or the same antibody preincubated with blocking peptide (right).

|                       |   |
|-----------------------|---|
| <b>Product Modify</b> | Phospho-Thr142  |
| <b>Usage</b>          | For Research Use Only. Not for use in diagnostic or therapeutic procedures. |