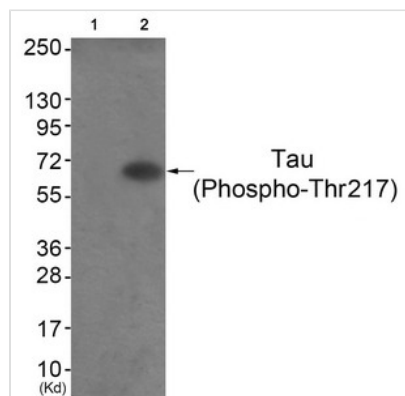




Phospho-MAPT (Thr217) Antibody

Product Code	CSB-PA141564
Storage	Upon receipt, store at -20°C or -80°C. Avoid repeated freeze.
Uniprot No.	P10636
Immunogen	Peptide sequence around phosphorylation site of threonine 217(L-P-T(p)-P-P) derived from Human Tau.
Raised In	Rabbit
Species Reactivity	Human,Mouse,Rat
Specificity	The antibody detects endogenous levels of Tau only when phosphorylated at threonine 217.
Tested Applications	ELISA,WB;WB:1:500-1:1000
Form	Rabbit IgG in phosphate buffered saline (without Mg ²⁺ and Ca ²⁺), pH 7.4, 150mM NaCl, 0.02% sodium azide and 50% glycerol.
Purification Method	Antibodies were produced by immunizing rabbits with synthetic phosphopeptide and KLH conjugates. Antibodies were purified by affinity-chromatography using epitope-specific phosphopeptide. Non-phospho specific antibodies were removed by chromatography usi
Clonality	Polyclonal
Alias	MAPT; MTBT1; PHF-tau;
Product Type	Polyclonal Antibody
Immunogen Species	Homo sapiens (Human)
Target Names	MAPT

Image



Western blot analysis of extracts from HepG2 cells (Lane 2), using Tau (Phospho-Thr217) Antibody. The lane on the left is treated with antigen-specific peptide.

Product Modify	Phospho-Thr217
Usage	For Research Use Only. Not for use in diagnostic or therapeutic procedures.