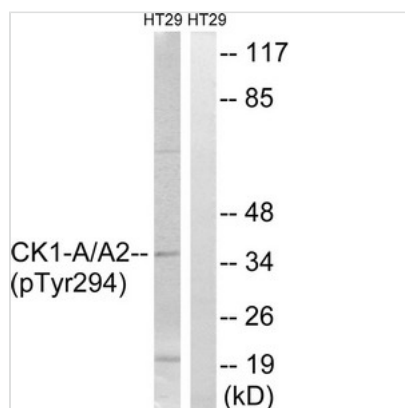




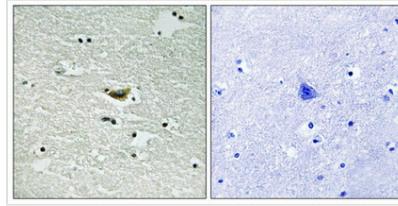
Phospho-CSNK1A1/CSNK1A1L (Tyr294) Antibody

Product Code	CSB-PA047644
Storage	Upon receipt, store at -20°C or -80°C. Avoid repeated freeze.
Immunogen	Peptide sequence around phosphorylation site of tyrosine 294 (Y-D-Y(p)-T-F) derived from Human CK-1α.
Raised In	Rabbit
Species Reactivity	Human, Mouse, Rat
Specificity	The antibody detects endogenous levels of CK-1α only when phosphorylated at tyrosine 294.
Tested Applications	ELISA, WB, IHC; WB: 1:500-1:1000, IHC: 1:50-1:100
Form	Rabbit IgG in phosphate buffered saline (without Mg ²⁺ and Ca ²⁺), pH 7.4, 150mM NaCl, 0.02% sodium azide and 50% glycerol.
Purification Method	Antibodies were produced by immunizing rabbits with synthetic phosphopeptide and KLH conjugates. Antibodies were purified by affinity-chromatography using epitope-specific phosphopeptide. Non-phospho specific antibodies were removed by chromatography.
Clonality	Polyclonal
Alias	KC1A; CKI-alpha; CSNK1A1; alpha isoform; Casein kinase I
Product Type	Polyclonal Antibody
Immunogen Species	Homo sapiens (Human)
Target Names	CSNK1A1/CSNK1A1L
Accession NO.	Swiss-Prot: P48729/Q8N752; NCBI Gene: 1452/122011; NCBI Protein: NP_001883.4.

Image



Western blot analysis of extracts from HT-29 cells treated with heat shock using CK-1α (Phospho-Tyr294) Antibody. The lane on the right is treated with the antigen-specific peptide.



Immunohistochemical analysis of paraffin-embedded human brain tissue using CK-1 α (Phospho-Tyr294) antibody (left) or the same antibody preincubated with blocking peptide (right).

Product Modify

Phospho-Tyr294

Usage

For Research Use Only. Not for use in diagnostic or therapeutic procedures.