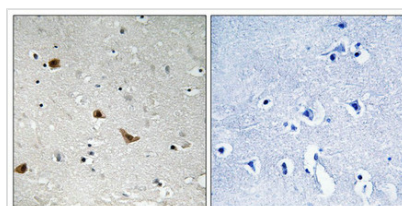




Phospho-IKBKG (Ser376) Antibody

Product Code	CSB-PA552608
Storage	Upon receipt, store at -20°C or -80°C. Avoid repeated freeze.
Uniprot No.	Q9Y6K9
Immunogen	Peptide sequence around phosphorylation site of Serine 376(Y-L-S(p)-S-P) derived from Human IKK-γ.
Raised In	Rabbit
Species Reactivity	Human
Specificity	The antibody detects endogenous levels of IKK-γ only when phosphorylated at serine 376.
Tested Applications	ELISA,IHC;IHC:1:50-1:100
Form	Rabbit IgG in phosphate buffered saline (without Mg ²⁺ and Ca ²⁺), pH 7.4, 150mM NaCl, 0.02% sodium azide and 50% glycerol.
Purification Method	Antibodies were produced by immunizing rabbits with synthetic phosphopeptide and KLH conjugates. Antibodies were purified by affinity-chromatography using epitope-specific phosphopeptide. Non-phospho specific antibodies were removed by chromatography use
Clonality	Polyclonal
Alias	FIP3; IKBKG; IKKAP1; IKKG; NF-kappaB
Product Type	Polyclonal Antibody
Immunogen Species	Homo sapiens (Human)
Target Names	IKBKG

Image



Immunohistochemical analysis of paraffin-embedded human brain tissue using IKK-γ (Phospho-Ser376) antibody (left) or the same antibody preincubated with blocking peptide (right).

Product Modify	Phospho-Ser376
Usage	For Research Use Only. Not for use in diagnostic or therapeutic procedures.