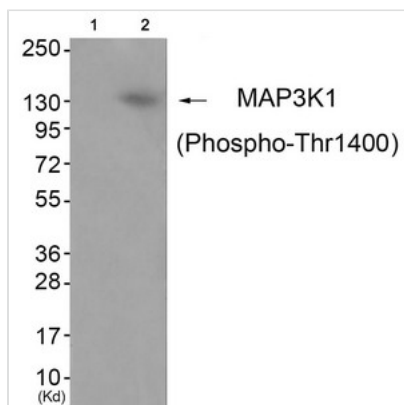




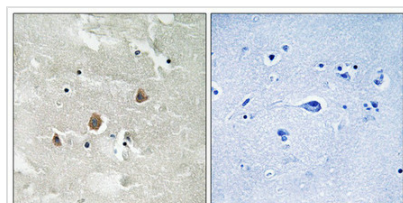
Phospho-MAP3K1 (Thr1402) Antibody

Product Code	CSB-PA177236
Storage	Upon receipt, store at -20°C or -80°C. Avoid repeated freeze.
Uniprot No.	Q13233
Immunogen	Peptide sequence around phosphorylation site of threonine 1402(T-G-A(p)-G-F) derived from Human MAP3K1.
Raised In	Rabbit
Species Reactivity	Human,Mouse,Rat
Specificity	The antibody detects endogenous levels of MAP3K1 only when phosphorylated at threonine 1402.
Tested Applications	ELISA,WB,IHC;WB:1:500-1:1000,IHC:1:50-1:100
Form	Rabbit IgG in phosphate buffered saline (without Mg ²⁺ and Ca ²⁺), pH 7.4, 150mM NaCl, 0.02% sodium azide and 50% glycerol.
Purification Method	Antibodies were produced by immunizing rabbits with synthetic phosphopeptide and KLH conjugates. Antibodies were purified by affinity-chromatography using epitope-specific phosphopeptide. Non-phospho specific antibodies were removed by chromatography usi
Clonality	Polyclonal
Alias	M3K1; MAP3K1; MAPKKK1; MEKK1;
Product Type	Polyclonal Antibody
Immunogen Species	Homo sapiens (Human)
Target Names	MAP3K1

Image



Western blot analysis of extracts from JK cells (Lane 2), using MAP3K1 (Phospho-Thr1400) Antibody. The lane on the left is treated with antigen-specific peptide.



Immunohistochemical analysis of paraffin-embedded human brain tissue using MAP3K1 (Phospho-Thr1400) antibody (left) or the same antibody preincubated with blocking peptide (right).



Product Modify

Phospho-Thr1402

Usage

For Research Use Only. Not for use in diagnostic or therapeutic procedures.