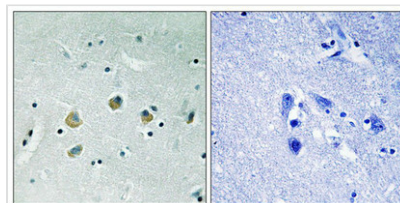




# Phospho-MAP3K8 (Ser400) Antibody

<b>Product Code</b>	CSB-PA588716
<b>Storage</b>	Upon receipt, store at -20°C or -80°C. Avoid repeated freeze.
<b>Uniprot No.</b>	P41279
<b>Immunogen</b>	Peptide sequence around phosphorylation site of Serine 400(C-Q-S(p)-L-D) derived from HumanMAP3K8.
<b>Raised In</b>	Rabbit
<b>Species Reactivity</b>	Human,Mouse,Rat
<b>Specificity</b>	The antibody detects endogenous levels of MAP3K8 only when phosphorylated at serine 400.
<b>Tested Applications</b>	ELISA,IHC;IHC:1:50-1:100
<b>Form</b>	Rabbit IgG in phosphate buffered saline (without Mg <sup>2+</sup> and Ca <sup>2+</sup> ), pH 7.4, 150mM NaCl, 0.02% sodium azide and 50% glycerol.
<b>Purification Method</b>	Antibodies were produced by immunizing rabbits with synthetic phosphopeptide and KLH conjugates. Antibodies were purified by affinity-chromatography using epitope-specific phosphopeptide. Non-phospho specific antibodies were removed by chromatography using
<b>Clonality</b>	Polyclonal
<b>Alias</b>	C-COT;; M3K8; MAP3K8; TPL2;
<b>Product Type</b>	Polyclonal Antibody
<b>Immunogen Species</b>	Homo sapiens (Human)
<b>Target Names</b>	MAP3K8

## Image



Immunohistochemical analysis of paraffin-embedded human brain tissue using MAP3K8 (Phospho-Ser400) antibody (left) or the same antibody preincubated with blocking peptide (right).

<b>Product Modify</b>	Phospho-Ser400
-----------------------	----------------