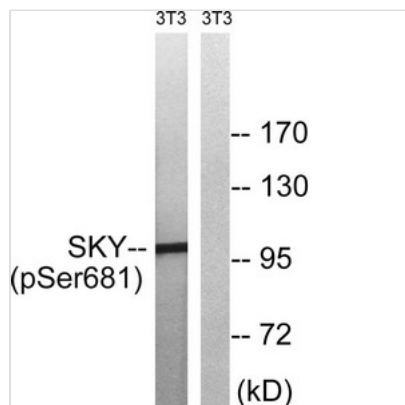




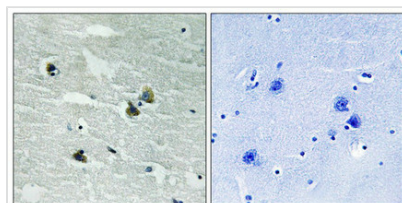
# Phospho-MERTK/TYRO3 (Tyr749/681) Antibody

<b>Product Code</b>	CSB-PA038071
<b>Storage</b>	Upon receipt, store at -20°C or -80°C. Avoid repeated freeze.
<b>Uniprot No.</b>	Q12866
<b>Immunogen</b>	Peptide sequence around phosphorylation site of tyrosine 749/681(K-I-Y(p)-S-G) derived from Human MER/SKY .
<b>Raised In</b>	Rabbit
<b>Species Reactivity</b>	Human,Mouse,Rat
<b>Specificity</b>	The antibody detects endogenous levels of MER/SKY only when phosphorylated at tyrosine 749/681.
<b>Tested Applications</b>	ELISA,WB,IHC;WB:1:500-1:1000,IHC:1:50-1:100
<b>Form</b>	Rabbit IgG in phosphate buffered saline (without Mg <sup>2+</sup> and Ca <sup>2+</sup> ), pH 7.4, 150mM NaCl, 0.02% sodium azide and 50% glycerol.
<b>Purification Method</b>	Antibodies were produced by immunizing rabbits with synthetic phosphopeptide and KLH conjugates. Antibodies were purified by affinity-chromatography using epitope-specific phosphopeptide. Non-phospho specific antibodies were removed by chromatography usi
<b>Clonality</b>	Polyclonal
<b>Alias</b>	C-mer; MERK; MERTK;
<b>Product Type</b>	Polyclonal Antibody
<b>Immunogen Species</b>	Homo sapiens (Human)
<b>Target Names</b>	MERTK/TYRO3

## Image



Western blot analysis of extracts from 3T3 cells treated with EGF using MER/SKY (Phospho-Tyr749/681) Antibody. The lane on the right is treated with the antigen-specific peptide.



Immunohistochemical analysis of paraffin-embedded human brain tissue using MER/SKY (Phospho-Tyr749/681) antibody (left) or the same antibody preincubated with blocking peptide (right).



---

**Product Modify**

Phospho-Tyr749/681

---

**Usage**

For Research Use Only. Not for use in diagnostic or therapeutic procedures.