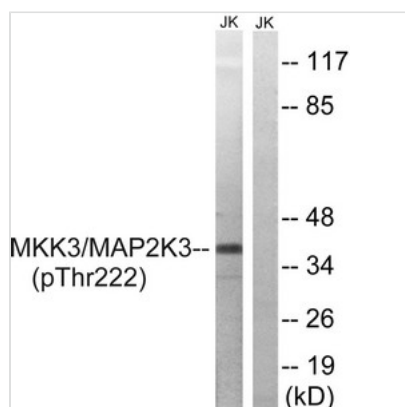




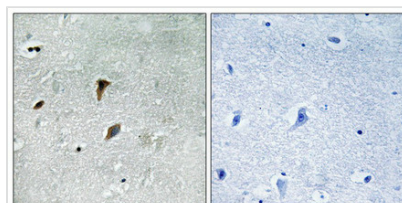
Phospho-MAP2K3 (Thr222) Antibody

Product Code	CSB-PA597904
Storage	Upon receipt, store at -20°C or -80°C. Avoid repeated freeze.
Uniprot No.	P46734
Immunogen	Peptide sequence around phosphorylation site of threonine 222(A-K-T(p)-M-D) derived from Human MAP2K3 .
Raised In	Rabbit
Species Reactivity	Human,Mouse,Rat
Specificity	The antibody detects endogenous levels of MAP2K3 only when phosphorylated at threonine 222.
Tested Applications	ELISA,WB,IHC;WB:1:500-1:1000,IHC:1:50-1:100
Form	Rabbit IgG in phosphate buffered saline (without Mg ²⁺ and Ca ²⁺), pH 7.4, 150mM NaCl, 0.02% sodium azide and 50% glycerol.
Purification Method	Antibodies were produced by immunizing rabbits with synthetic phosphopeptide and KLH conjugates. Antibodies were purified by affinity-chromatography using epitope-specific phosphopeptide. Non-phospho specific antibodies were removed by chromatography usi
Clonality	Polyclonal
Alias	MAP2K3; MAPKK 3; MEK3; MP2K3; PRKMK3
Product Type	Polyclonal Antibody
Immunogen Species	Homo sapiens (Human)
Target Names	MAP2K3

Image



Western blot analysis of extracts from Jurkat cells treated with serum using MAP2K3 (Phospho-Thr222) Antibody. The lane on the right is treated with the antigen-specific peptide.



Immunohistochemical analysis of paraffin-embedded human brain tissue using MAP2K3 (Phospho-Thr222) antibody (left) or the same antibody preincubated with blocking peptide (right).



Product Modify

Phospho-Thr222

Usage

For Research Use Only. Not for use in diagnostic or therapeutic procedures.