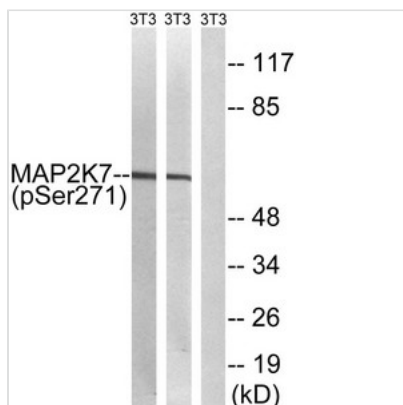




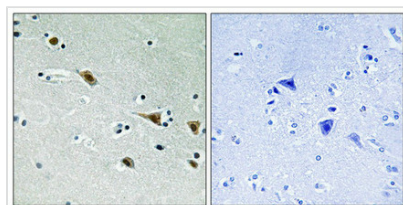
Phospho-MAP2K7 (Ser271) Antibody

Product Code	CSB-PA112719
Storage	Upon receipt, store at -20°C or -80°C. Avoid repeated freeze.
Uniprot No.	O14733
Immunogen	Peptide sequence around phosphorylation site of Serine271(V-D-S(p)-K-A) derived from Human MAP2K7.
Raised In	Rabbit
Species Reactivity	Human,Mouse,Rat
Specificity	The antibody detects endogenous levels of MAP2K7 only when phosphorylated at serine 271.
Tested Applications	ELISA,WB,IHC;WB:1:500-1:1000,IHC:1:50-1:100
Form	Rabbit IgG in phosphate buffered saline (without Mg ²⁺ and Ca ²⁺), pH 7.4, 150mM NaCl, 0.02% sodium azide and 50% glycerol.
Purification Method	Antibodies were produced by immunizing rabbits with synthetic phosphopeptide and KLH conjugates. Antibodies were purified by affinity-chromatography using epitope-specific phosphopeptide. Non-phospho specific antibodies were removed by chromatography
Clonality	Polyclonal
Alias	PRKMK7; JNKK2; MKK7; MAP2K7; MP2K7
Product Type	Polyclonal Antibody
Immunogen Species	Homo sapiens (Human)
Target Names	MAP2K7

Image



Western blot analysis of extracts from 3T3 cells treated with insulin using MAP2K7 (Phospho-Ser271) Antibody. The lane on the right is treated with the antigen-specific peptide.



Immunohistochemical analysis of paraffin-embedded human brain tissue, using MAP2K7 (Phospho-Ser271) antibody (left) or the same antibody preincubated with blocking peptide (right).



Product Modify

Phospho-Ser271

Usage

For Research Use Only. Not for use in diagnostic or therapeutic procedures.