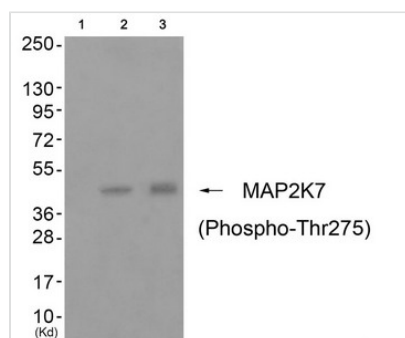




# Phospho-MAP2K7 (Thr275) Antibody

<b>Product Code</b>	CSB-PA583333
<b>Storage</b>	Upon receipt, store at -20°C or -80°C. Avoid repeated freeze.
<b>Uniprot No.</b>	O14733
<b>Immunogen</b>	Peptide sequence around phosphorylation site of threonine 275(A-K-T(p)-R-S) derived from Human MAP2K7.
<b>Raised In</b>	Rabbit
<b>Species Reactivity</b>	Human,Mouse,Rat
<b>Specificity</b>	The antibody detects endogenous levels of MAP2K7 only when phosphorylated at threonine 275.
<b>Tested Applications</b>	ELISA,WB;WB:1:500-1:1000
<b>Form</b>	Rabbit IgG in phosphate buffered saline (without Mg <sup>2+</sup> and Ca <sup>2+</sup> ), pH 7.4, 150mM NaCl, 0.02% sodium azide and 50% glycerol.
<b>Purification Method</b>	Antibodies were produced by immunizing rabbits with synthetic phosphopeptide and KLH conjugates. Antibodies were purified by affinity-chromatography using epitope-specific phosphopeptide. Non-phospho specific antibodies were removed by chromatography
<b>Clonality</b>	Polyclonal
<b>Alias</b>	PRKMK7; JNKK2; MKK7; MAP2K7; MP2K7
<b>Product Type</b>	Polyclonal Antibody
<b>Immunogen Species</b>	Homo sapiens (Human)
<b>Target Names</b>	MAP2K7

## Image



Western blot analysis of extracts from cos-7 cells (Lane 2) and 3T3 cells (Lane 3), using MAP2K7 (Phospho-Thr275) Antibody. The lane on the left is treated with antigen-specific peptide.

**Product Modify** Phospho-Thr275