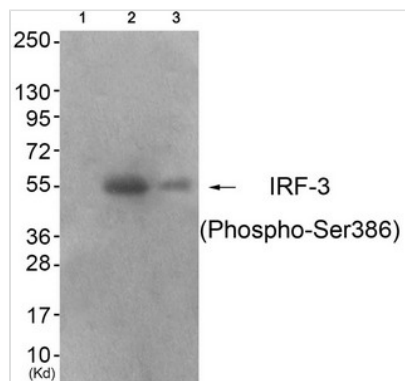




Phospho-IRF3 (Ser386) Antibody

Product Code	CSB-PA029024
Storage	Upon receipt, store at -20°C or -80°C. Avoid repeated freeze.
Uniprot No.	Q14653
Immunogen	Peptide sequence around phosphorylation site of Serine 386(A-S-S(p)-L-E) derived from Human IRF-3.
Raised In	Rabbit
Species Reactivity	Human
Specificity	The antibody detects endogenous levels of IRF-3 only when phosphorylated at serine 386.
Tested Applications	ELISA,WB;WB:1:500-1:1000
Form	Rabbit IgG in phosphate buffered saline (without Mg ²⁺ and Ca ²⁺), pH 7.4, 150mM NaCl, 0.02% sodium azide and 50% glycerol.
Purification Method	Antibodies were produced by immunizing rabbits with synthetic phosphopeptide and KLH conjugates. Antibodies were purified by affinity-chromatography using epitope-specific phosphopeptide. Non-phospho specific antibodies were removed by chromatography usi
Clonality	Polyclonal
Alias	IRF3; Interferon regulatory factor 3;
Product Type	Polyclonal Antibody
Immunogen Species	Homo sapiens (Human)
Target Names	IRF3

Image



Western blot analysis of extracts from 293 cells (Lane 2) and colo cells (Lane 3), using IRF-3 (Phospho-Ser386) Antibody. The lane on the left is treated with antigen-specific peptide.

Product Modify	Phospho-Ser386
Usage	For Research Use Only. Not for use in diagnostic or therapeutic procedures.