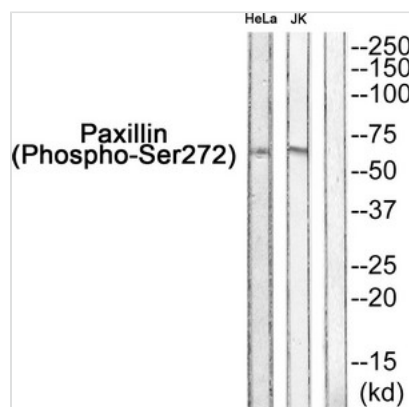




Phospho-PXN (Ser272) Antibody

Product Code	CSB-PA207031
Storage	Upon receipt, store at -20°C or -80°C. Avoid repeated freeze.
Uniprot No.	P49023
Immunogen	Peptide sequence around phosphorylation site of Serine 272(M-A-S(p)-L-S) derived from Human Paxillin.
Raised In	Rabbit
Species Reactivity	Human,Mouse,Rat
Specificity	The Antibody detects endogenous levels of Paxillin only when phosphorylated at Ser272
Tested Applications	ELISA,WB;WB:1:500-1:1000
Form	Rabbit IgG in phosphate buffered saline (without Mg ²⁺ and Ca ²⁺), pH 7.4, 150mM NaCl, 0.02% sodium azide and 50% glycerol.
Purification Method	Antibodies were produced by immunizing rabbits with synthetic phosphopeptide and KLH conjugates. Antibodies were purified by affinity-chromatography using epitope-specific phosphopeptide. Non-phospho specific antibodies were removed by chromatography using
Clonality	Polyclonal
Alias	Paxillin; PXN;
Product Type	Polyclonal Antibody
Immunogen Species	Homo sapiens (Human)
Target Names	PXN

Image



Western blot analysis of extracts from HeLa and JK using Paxillin (Phospho-Ser272) Antibody. The lane on the right is treated with the antigen-specific peptide.

Product Modify	Phospho-Ser272
-----------------------	----------------