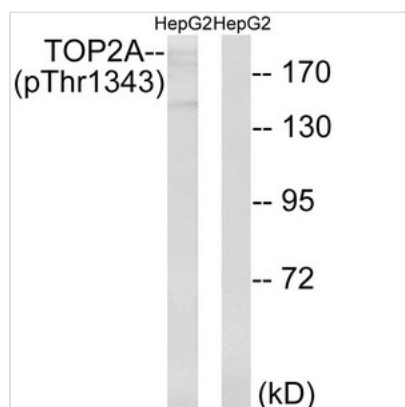




Phospho-TOP2A (Thr1343) Antibody

Product Code	CSB-PA248815
Storage	Upon receipt, store at -20°C or -80°C. Avoid repeated freeze.
Uniprot No.	P11388
Immunogen	Peptide sequence around phosphorylation site of threonine1343(E-K-T(p)-D-D) derived from Human TOP2A.
Raised In	Rabbit
Species Reactivity	Human
Specificity	The antibody detects endogenous levels of TOP2A only when phosphorylated at threonine 1343.
Tested Applications	ELISA,WB;WB:1:500-1:1000
Form	Rabbit IgG in phosphate buffered saline (without Mg ²⁺ and Ca ²⁺), pH 7.4, 150mM NaCl, 0.02% sodium azide and 50% glycerol.
Purification Method	Antibodies were produced by immunizing rabbits with synthetic phosphopeptide and KLH conjugates. Antibodies were purified by affinity-chromatography using epitope-specific phosphopeptide. Non-phospho specific antibodies were removed by chromatography using
Clonality	Polyclonal
Alias	TP2A; TOP2; TOP2A; P11388-1;
Product Type	Polyclonal Antibody
Immunogen Species	Homo sapiens (Human)
Target Names	TOP2A

Image



Western blot analysis of extracts from HepG2 cells treated with Ca²⁺ using TOP2A (Phospho-Thr1343) Antibody. The lane on the right is treated with the antigen-specific peptide.

Product Modify Phospho-Thr1343