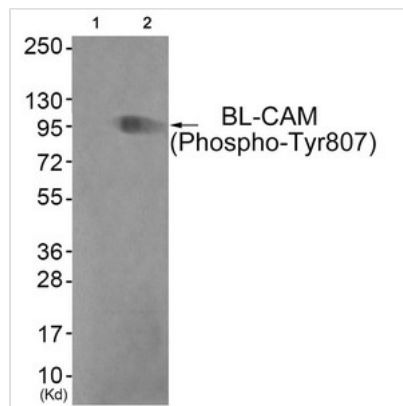




Phospho-CD22 (Tyr807) Antibody

| | |
|----------------------------|--|
| Product Code | CSB-PA912726 |
| Storage | Upon receipt, store at -20°C or -80°C. Avoid repeated freeze. |
| Uniprot No. | P20273 |
| Immunogen | Peptide sequence around phosphorylation site of tyrosine 807 (G-D-Y(p)-E-N) derived from Human BL-CAM. |
| Raised In | Rabbit |
| Species Reactivity | Human |
| Specificity | The antibody detects endogenous levels of BL-CAM only when phosphorylated at tyrosine 807. |
| Tested Applications | ELISA,WB;WB:1:500-1:1000 |
| Form | Rabbit IgG in phosphate buffered saline (without Mg ²⁺ and Ca ²⁺), pH 7.4, 150mM NaCl, 0.02% sodium azide and 50% glycerol. |
| Purification Method | Antibodies were produced by immunizing rabbits with synthetic phosphopeptide and KLH conjugates. Antibodies were purified by affinity-chromatography using epitope-specific phosphopeptide. Non-phospho specific antibodies were removed by chromatography usi |
| Clonality | Polyclonal |
| Alias | Siglec-2; B-cell receptor CD22; BL-CAM; Leu-14; B-lymphocyte cell adhesion molecule |
| Product Type | Polyclonal Antibody |
| Immunogen Species | Homo sapiens (Human) |
| Target Names | CD22 |

Image



Western blot analysis of extracts from COS7 cells (Lane 2), using BL-CAM (Phospho-Tyr807) Antibody. The lane on the left is treated with antigen-specific peptide.

| | |
|-----------------------|---|
| Product Modify | Phospho-Tyr807 |
| Usage | For Research Use Only. Not for use in diagnostic or therapeutic procedures. |