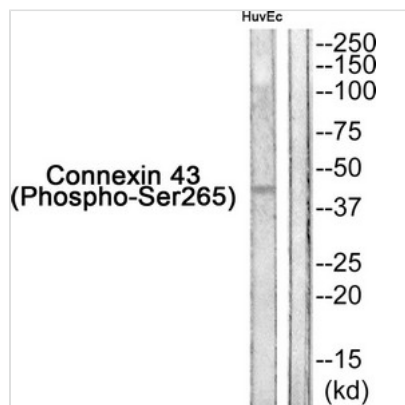




Phospho-GJA1 (Ser265) Antibody

Product Code	CSB-PA069474
Storage	Upon receipt, store at -20°C or -80°C. Avoid repeated freeze.
Uniprot No.	P17302
Immunogen	Peptide sequence around phosphorylation site of Serine 265(Q-K-Y(p)-A-Y) derived from Human Connexin 43.
Raised In	Rabbit
Species Reactivity	Human,Mouse,Rat
Specificity	Connexin 43 antibody detects endogenous levels of Connexin 43 only when phosphorylated at Serine 265
Tested Applications	ELISA,WB;WB:1:500-1:1000
Form	Rabbit IgG in phosphate buffered saline (without Mg ²⁺ and Ca ²⁺), pH 7.4, 150mM NaCl, 0.02% sodium azide and 50% glycerol.
Purification Method	Antibodies were produced by immunizing rabbits with synthetic phosphopeptide and KLH conjugates. Antibodies were purified by affinity-chromatography using epitope-specific phosphopeptide. Non-phospho specific antibodies were removed by chromatography use
Clonality	Polyclonal
Alias	CX43; CXA1; CXN-43; GJA1;
Product Type	Polyclonal Antibody
Immunogen Species	Homo sapiens (Human)
Target Names	GJA1

Image



Western blot analysis of extracts from HuvEc cells using Connexin 43 (Phospho-Ser265) Antibody. The lane on the right is treated with the antigen-specific peptide.

Product Modify	Phospho-Ser265
Usage	For Research Use Only. Not for use in diagnostic or therapeutic procedures.