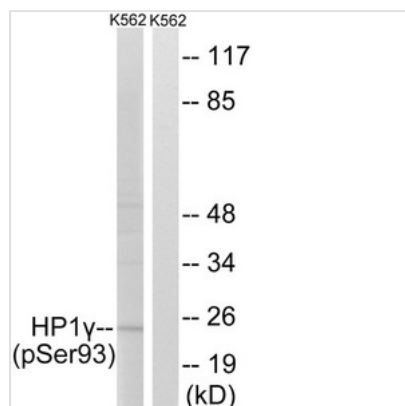




Phospho-CBX3 (Ser93) Antibody

Product Code	CSB-PA910579
Storage	Upon receipt, store at -20°C or -80°C. Avoid repeated freeze.
Uniprot No.	Q13185
Immunogen	Peptide sequence around phosphorylation site of Serine 93(R-L-S(p)-L-S) derived from Human HP1γ .
Raised In	Rabbit
Species Reactivity	Human,Mouse,Rat
Specificity	The antibody detects endogenous levels of HP1γ only when phosphorylated at serine 93.
Tested Applications	ELISA,WB;WB:1:500-1:1000
Form	Rabbit IgG in phosphate buffered saline (without Mg ²⁺ and Ca ²⁺), pH 7.4, 150mM NaCl, 0.02% sodium azide and 50% glycerol.
Purification Method	Antibodies were produced by immunizing rabbits with synthetic phosphopeptide and KLH conjugates. Antibodies were purified by affinity-chromatography using epitope-specific phosphopeptide. Non-phospho specific antibodies were removed by chromatography using
Clonality	Polyclonal
Alias	HECH; HP1 gamma; HP1Hs-gamma; chromobox 3;
Product Type	Polyclonal Antibody
Immunogen Species	Homo sapiens (Human)
Target Names	CBX3

Image



Western blot analysis of extracts from K562 cells treated with forskolin using HP1γ (Phospho-Ser93) Antibody. The lane on the right is treated with the antigen-specific peptide.

Product Modify Phospho-Ser93