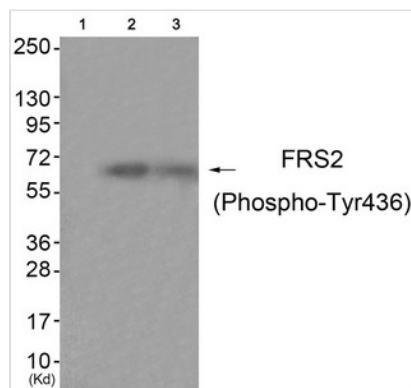




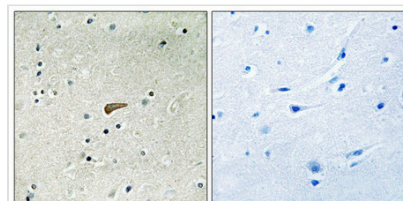
Phospho-FRS2 (Tyr436) Antibody

Product Code	CSB-PA946917
Storage	Upon receipt, store at -20°C or -80°C. Avoid repeated freeze.
Uniprot No.	Q8WU20
Immunogen	Peptide sequence around phosphorylation site of tyrosine 436(L-N-Y(p)-I-Q) derived from Human FRS2 .
Raised In	Rabbit
Species Reactivity	Human,Mouse
Specificity	The antibody detects endogenous levels of FRS2 only when phosphorylated at tyrosine 436.
Tested Applications	ELISA,WB,IHC;WB:1:500-1:1000,IHC:1:50-1:100
Form	Rabbit IgG in phosphate buffered saline (without Mg ²⁺ and Ca ²⁺), pH 7.4, 150mM NaCl, 0.02% sodium azide and 50% glycerol.
Purification Method	Antibodies were produced by immunizing rabbits with synthetic phosphopeptide and KLH conjugates. Antibodies were purified by affinity-chromatography using epitope-specific phosphopeptide. Non-phospho specific antibodies were removed by chromatography
Clonality	Polyclonal
Alias	SNT-1; SNT2; FGFR signalling adaptor;
Product Type	Polyclonal Antibody
Immunogen Species	Homo sapiens (Human)
Target Names	FRS2

Image



Western blot analysis of extracts from HuvEc cells (Lane 2) and JK cells (Lane 3), using FRS2 (Phospho-Tyr436) Antibody. The lane on the left is treated with antigen-specific peptide.



Immunohistochemical analysis of paraffin-embedded human brain tissue using FRS2 (Phospho-Tyr436) antibody (left) or the same antibody preincubated with blocking peptide (right).

**Product Modify**

Phospho-Tyr436