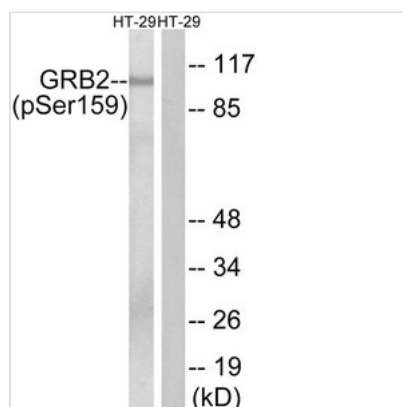




Phospho-GAB2 (Ser159) Antibody

Product Code	CSB-PA210856
Storage	Upon receipt, store at -20°C or -80°C. Avoid repeated freeze.
Uniprot No.	Q9UQC2
Immunogen	Peptide sequence around phosphorylation site of Serine 159(K-S-S(p)-A-P) derived from Human GRB2.
Raised In	Rabbit
Species Reactivity	Human,Mouse,Rat
Specificity	The antibody detects endogenous levels of GRB2 only when phosphorylated at serine 159.
Tested Applications	ELISA,WB;WB:1:500-1:1000
Form	Rabbit IgG in phosphate buffered saline (without Mg ²⁺ and Ca ²⁺), pH 7.4, 150mM NaCl, 0.02% sodium azide and 50% glycerol.
Purification Method	Antibodies were produced by immunizing rabbits with synthetic phosphopeptide and KLH conjugates. Antibodies were purified by affinity-chromatography using epitope-specific phosphopeptide. Non-phospho specific antibodies were removed by chromatography usi
Clonality	Polyclonal
Alias	GABJ; KIAA0571; pp100;
Product Type	Polyclonal Antibody
Immunogen Species	Homo sapiens (Human)
Target Names	GAB2

Image



Western blot analysis of extracts from HT-29 cells treated with serum using GRB2 (Phospho-Ser159) Antibody. The lane on the right is treated with the antigen-specific peptide.

Product Modify	Phospho-Ser159
Usage	For Research Use Only. Not for use in diagnostic or therapeutic procedures.