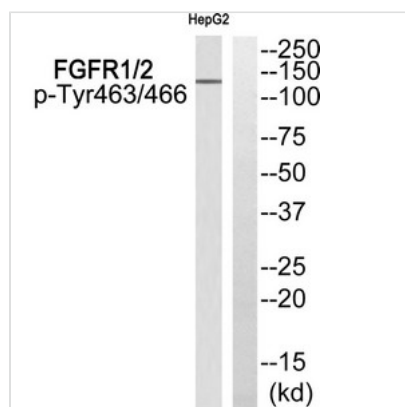




# Phospho-FGFR1/FGFR2 (Tyr463/466) Antibody

<b>Product Code</b>	CSB-PA443701
<b>Storage</b>	Upon receipt, store at -20°C or -80°C. Avoid repeated freeze.
<b>Uniprot No.</b>	P11362
<b>Immunogen</b>	Peptide sequence around phosphorylation site of tyrosine 463/466(S-E-Y(p)-E-L) derived from Human FGFR1/2.
<b>Raised In</b>	Rabbit
<b>Species Reactivity</b>	Human,Mouse
<b>Specificity</b>	The antibody detects endogenous levels of FGFR1/2 only when phosphorylated at tyrosine 463/466.
<b>Tested Applications</b>	ELISA,WB;WB:1:500-1:1000
<b>Form</b>	Rabbit IgG in phosphate buffered saline (without Mg <sup>2+</sup> and Ca <sup>2+</sup> ), pH 7.4, 150mM NaCl, 0.02% sodium azide and 50% glycerol.
<b>Purification Method</b>	Antibodies were produced by immunizing rabbits with synthetic phosphopeptide and KLH conjugates. Antibodies were purified by affinity-chromatography using epitope-specific phosphopeptide. Non-phospho specific antibodies were removed by chromatography usi
<b>Clonality</b>	Polyclonal
<b>Alias</b>	BFGFR; CEK; FLG; CD331; FLT2
<b>Product Type</b>	Polyclonal Antibody
<b>Immunogen Species</b>	Homo sapiens (Human)
<b>Target Names</b>	FGFR1/FGFR2

## Image



Western blot analysis of extracts from HepG2 cells using FGFR1/2 (Phospho-Tyr463/466) Antibody. The lane on the right is treated with the antigen-specific peptide.

**Product Modify** Phospho-Tyr463/466