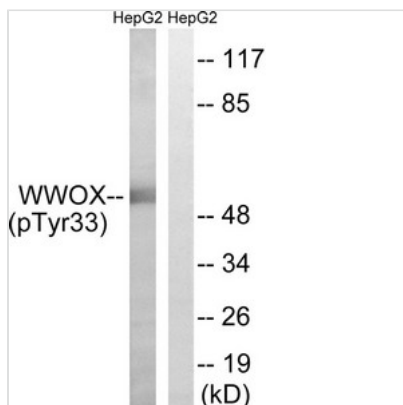




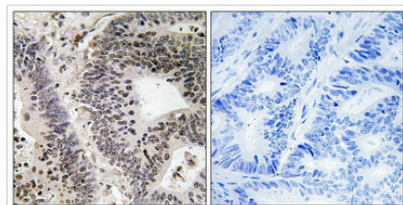
# Phospho-WWOX (Tyr33) Antibody

<b>Product Code</b>	CSB-PA549079
<b>Storage</b>	Upon receipt, store at -20°C or -80°C. Avoid repeated freeze.
<b>Uniprot No.</b>	Q96KM3
<b>Immunogen</b>	Peptide sequence around phosphorylation site of tyrosine 33 (W-V-Y(p)-Y-A) derived from Human WWOX.
<b>Raised In</b>	Rabbit
<b>Species Reactivity</b>	Human, Mouse
<b>Specificity</b>	The antibody detects endogenous levels of WWOX only when phosphorylated at tyrosine 33.
<b>Tested Applications</b>	ELISA, WB, IHC; WB: 1:500-1:1000, IHC: 1:50-1:100
<b>Form</b>	Rabbit IgG in phosphate buffered saline (without Mg <sup>2+</sup> and Ca <sup>2+</sup> ), pH 7.4, 150mM NaCl, 0.02% sodium azide and 50% glycerol.
<b>Purification Method</b>	Antibodies were produced by immunizing rabbits with synthetic phosphopeptide and KLH conjugates. Antibodies were purified by affinity-chromatography using epitope-specific phosphopeptide. Non-phospho specific antibodies were removed by chromatography
<b>Clonality</b>	Polyclonal
<b>Alias</b>	FOR; WOX1; Aberrant WW domain-containing oxidoreductase;
<b>Product Type</b>	Polyclonal Antibody
<b>Immunogen Species</b>	Homo sapiens (Human)
<b>Target Names</b>	WWOX

## Image



Western blot analysis of extracts from HepG2 cells treated with PMA using WWOX (Phospho-Tyr33) Antibody. The lane on the right is treated with the antigen-specific peptide.



Immunohistochemical analysis of paraffin-embedded human colon carcinoma tissue using WWOX (Phospho-Tyr33) antibody (left) or the same antibody preincubated with blocking peptide (right).



---

**Product Modify**

Phospho-Tyr33

---

**Usage**

For Research Use Only. Not for use in diagnostic or therapeutic procedures.