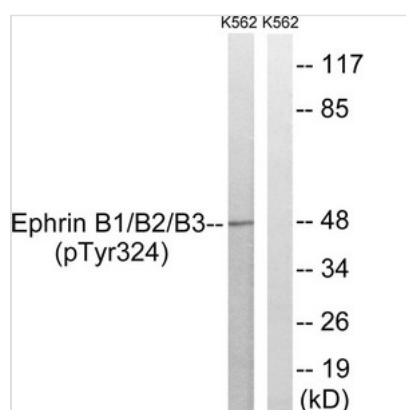




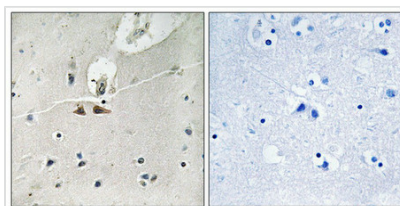
Phospho-EFNB1/EFNB2/EFNB3 (Tyr324) Antibody

| | |
|----------------------------|--|
| Product Code | CSB-PA142593 |
| Storage | Upon receipt, store at -20°C or -80°C. Avoid repeated freeze. |
| Uniprot No. | P98172 |
| Immunogen | Peptide sequence around phosphorylation site of tyrosine 324 (G-D-Y(p)-G-H) derived from Human Ephrin B1/B2/B3 . |
| Raised In | Rabbit |
| Species Reactivity | Human,Mouse,Rat |
| Specificity | The antibody detects endogenous levels of Ephrin B1/B2/B3 only when phosphorylated at tyrosine 324. |
| Tested Applications | ELISA,WB,IHC;WB:1:500-1:1000,IHC:1:50-1:100 |
| Form | Rabbit IgG in phosphate buffered saline (without Mg ²⁺ and Ca ²⁺), pH 7.4, 150mM NaCl, 0.02% sodium azide and 50% glycerol. |
| Purification Method | Antibodies were produced by immunizing rabbits with synthetic phosphopeptide and KLH conjugates. Antibodies were purified by affinity-chromatography using epitope-specific phosphopeptide. Non-phospho specific antibodies were removed by chromatography using |
| Clonality | Polyclonal |
| Alias | EPL2; CEL5-L; EFL-3; EFNB1; ELK-L |
| Product Type | Polyclonal Antibody |
| Immunogen Species | Homo sapiens (Human) |
| Target Names | EFNB1/EFNB2/EFNB3 |

Image



Western blot analysis of extracts from K562 cells treated with serum using Ephrin B1/B2/B3 (Phospho-Tyr324) Antibody. The lane on the right is treated with the antigen-specific peptide.



Immunohistochemical analysis of paraffin-embedded human brain tissue using Ephrin B1/B2/B3 (Phospho-Tyr324) antibody (left) or the same antibody preincubated with blocking peptide (right).

Product Modify

Phospho-Tyr324