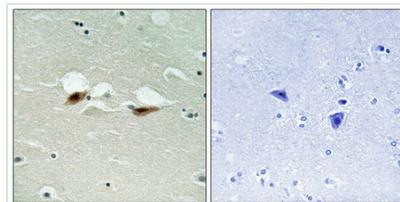




Phospho-ATF2 (Ser472) Antibody

| | |
|----------------------------|--|
| Product Code | CSB-PA590863 |
| Storage | Upon receipt, store at -20°C or -80°C. Avoid repeated freeze. |
| Uniprot No. | P15336 |
| Immunogen | Peptide sequence around phosphorylation site of Serine 472 (E-A-V(p)-A-T) derived from Human ATF-2. |
| Raised In | Rabbit |
| Species Reactivity | Human,Mouse,Rat |
| Specificity | The antibody detects endogenous levels of ATF-2 only when phosphorylated at serine 472. |
| Tested Applications | ELISA,IHC;IHC:1:50-1:100 |
| Form | Rabbit IgG in phosphate buffered saline (without Mg ²⁺ and Ca ²⁺), pH 7.4, 150mM NaCl, 0.02% sodium azide and 50% glycerol. |
| Purification Method | Antibodies were produced by immunizing rabbits with synthetic phosphopeptide and KLH conjugates. Antibodies were purified by affinity-chromatography using epitope-specific phosphopeptide. Non-phospho specific antibodies were removed by chromatography usi |
| Clonality | Polyclonal |
| Alias | Activating 2; ATF2; cAMP response element binding protein CRE- BP1; CREB2; HB16 |
| Product Type | Polyclonal Antibody |
| Immunogen Species | Homo sapiens (Human) |
| Target Names | ATF2 |

Image



Immunohistochemical analysis of paraffin-embedded human brain tissue using ATF-2 (Phospho-Ser472) antibody (left) or the same antibody preincubated with blocking peptide (right).

| | |
|-----------------------|---|
| Product Modify | Phospho-Ser472 |
| Usage | For Research Use Only. Not for use in diagnostic or therapeutic procedures. |