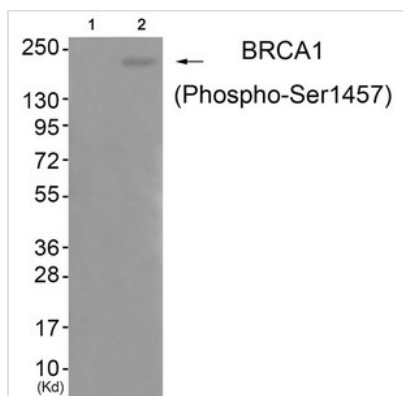




Phospho-BRCA1 (Ser1457) Antibody

Product Code	CSB-PA258596
Storage	Upon receipt, store at -20°C or -80°C. Avoid repeated freeze.
Uniprot No.	P38398
Immunogen	Peptide sequence around phosphorylation site of Serine 1457 (L-T-S(p)-Q-K) derived from Human BRCA1.
Raised In	Rabbit
Species Reactivity	Human
Specificity	The antibody detects endogenous levels of BRCA1 only when phosphorylated at serine 1457.
Tested Applications	ELISA,WB;WB:1:500-1:1000
Form	Rabbit IgG in phosphate buffered saline (without Mg ²⁺ and Ca ²⁺), pH 7.4, 150mM NaCl, 0.02% sodium azide and 50% glycerol.
Purification Method	Antibodies were produced by immunizing rabbits with synthetic phosphopeptide and KLH conjugates. Antibodies were purified by affinity-chromatography using epitope-specific phosphopeptide. Non-phospho specific antibodies were removed by chromatography usi
Clonality	Polyclonal
Alias	BRCA1; Breast cancer type 1 susceptibility protein; familial breast/ovarian cancer gene 1;
Product Type	Polyclonal Antibody
Immunogen Species	Homo sapiens (Human)
Target Names	BRCA1

Image



Western blot analysis of extracts from 293 cells (Lane 2), using BRCA1 (Phospho-Ser1457) Antibody. The lane on the left is treated with antigen-specific peptide.

Product Modify	Phospho-Ser1457
Usage	For Research Use Only. Not for use in diagnostic or therapeutic procedures.