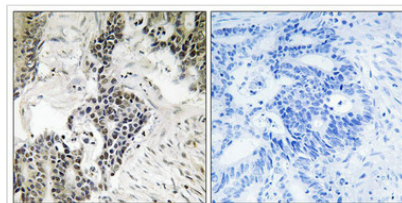




Phospho-CDC25C (Ser198) Antibody

Product Code	CSB-PA152554
Storage	Upon receipt, store at -20°C or -80°C. Avoid repeated freeze.
Uniprot No.	P30307
Immunogen	Peptide sequence around phosphorylation site of Serine 198(E-F-S(p)-L-K) derived from Human CDC25C.
Raised In	Rabbit
Species Reactivity	Human
Specificity	The antibody detects endogenous levels of CDC25C only when phosphorylated at serine 198.
Tested Applications	ELISA,IHC;IHC:1:50-1:100
Form	Rabbit IgG in phosphate buffered saline (without Mg ²⁺ and Ca ²⁺), pH 7.4, 150mM NaCl, 0.02% sodium azide and 50% glycerol.
Purification Method	Antibodies were produced by immunizing rabbits with synthetic phosphopeptide and KLH conjugates. Antibodies were purified by affinity-chromatography using epitope-specific phosphopeptide. Non-phospho specific antibodies were removed by chromatography
Clonality	Polyclonal
Alias	CDC25M1; MPI1B; MPIP3; EC 3.1.3.48;
Product Type	Polyclonal Antibody
Immunogen Species	Homo sapiens (Human)
Target Names	CDC25C

Image



Immunohistochemical analysis of paraffin-embedded human colon carcinoma tissue using CDC25C (Phospho-Ser198) antibody (left) or the same antibody preincubated with blocking peptide (right).

Product Modify	Phospho-Ser198
-----------------------	----------------