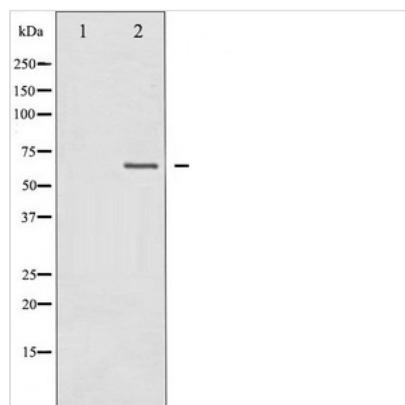




NF2 Antibody

Product Code	CSB-PA249373
Storage	Upon receipt, store at -20°C or -80°C. Avoid repeated freeze.
Uniprot No.	P35240
Immunogen	A synthesized peptide derived from Human Merlin
Raised In	Rabbit
Species Reactivity	Human,Mouse,Rat
Specificity	Merlin Antibody detects endogenous levels of total Merlin
Tested Applications	ELISA,WB;WB:1:500-1:2000
Form	Rabbit IgG in phosphate buffered saline , pH 7.4, 150mM NaCl, 0.02% sodium azide and 50% glycerol.
Purification Method	Antigen Affinity Purified
Clonality	Polyclonal
Alias	MERL; moesin-ezrin-radizin-like protein; neurofibromatosis type 2 gene; neurofibromatosis-2; Neurofibromin 2; NF-2; NF2; SCH; Schwannomerlin; schwannomerlin; Schwannomin
Product Type	Polyclonal Antibody
Immunogen Species	Homo sapiens (Human)
Target Names	NF2

Image



Western blot analysis of Merlin expression in IFN- α treated HuvEc whole cell lysates, The lane on the left is treated with the antigen-specific peptide.