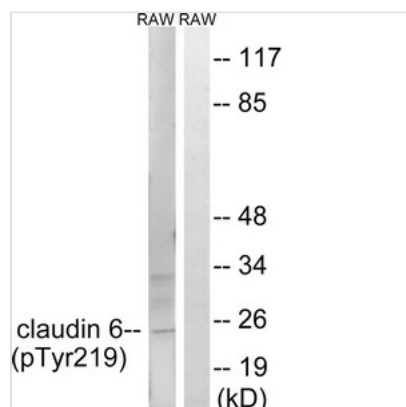




Phospho-CLDN6 (Tyr219) Antibody

Product Code	CSB-PA207788
Storage	Upon receipt, store at -20°C or -80°C. Avoid repeated freeze.
Uniprot No.	P56747
Immunogen	Peptide sequence around phosphorylation site of tyrosine 219 (T-K-N-Y(p)-V) derived from Human Claudin 6.
Raised In	Rabbit
Species Reactivity	Human,Mouse
Specificity	The antibody detects endogenous levels of Claudin 6 only when phosphorylated at tyrosine 219.
Tested Applications	ELISA,WB;WB:1:500-1:1000
Form	Rabbit IgG in phosphate buffered saline (without Mg ²⁺ and Ca ²⁺), pH 7.4, 150mM NaCl, 0.02% sodium azide and 50% glycerol.
Purification Method	Antibodies were produced by immunizing rabbits with synthetic phosphopeptide and KLH conjugates. Antibodies were purified by affinity-chromatography using epitope-specific phosphopeptide. Non-phospho specific antibodies were removed by chromatography
Clonality	Polyclonal
Alias	claudin 6; claudin-6; CLD6; Skullin 2;
Product Type	Polyclonal Antibody
Immunogen Species	Homo sapiens (Human)
Target Names	CLDN6

Image



Western blot analysis of extracts from RAW264.7 cells treated with UV using Claudin 6 (Phospho-Tyr219) Antibody. The lane on the right is treated with the antigen-specific peptide.

Product Modify	Phospho-Tyr219
-----------------------	----------------