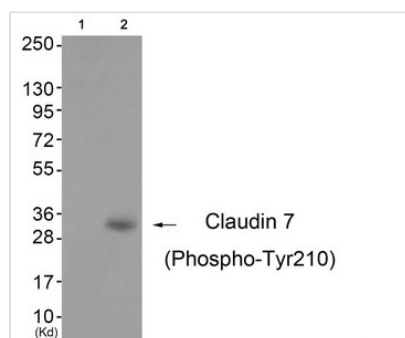




Phospho-CLDN7 (Tyr210) Antibody

Product Code	CSB-PA729723
Storage	Upon receipt, store at -20°C or -80°C. Avoid repeated freeze.
Uniprot No.	O95471
Immunogen	Peptide sequence around phosphorylation site of tyrosine 210 (S-K-E-Y(p)-V) derived from Human Claudin 7.
Raised In	Rabbit
Species Reactivity	Human,Mouse,Rat
Specificity	The antibody detects endogenous levels of Claudin 7 only when phosphorylated at tyrosine 210.
Tested Applications	ELISA,WB;WB:1:500-1:1000
Form	Rabbit IgG in phosphate buffered saline (without Mg ²⁺ and Ca ²⁺), pH 7.4, 150mM NaCl, 0.02% sodium azide and 50% glycerol.
Purification Method	Antibodies were produced by immunizing rabbits with synthetic phosphopeptide and KLH conjugates. Antibodies were purified by affinity-chromatography using epitope-specific phosphopeptide. Non-phospho specific antibodies were removed by chromatography usi
Clonality	Polyclonal
Alias	CEPTL2; claudin 7; CLD7; CPETRL2; CLDN7
Product Type	Polyclonal Antibody
Immunogen Species	Homo sapiens (Human)
Target Names	CLDN7

Image



Western blot analysis of extracts from 3T3 cells (Lane 2), using Claudin 7 (Phospho-Tyr210) Antibody. The lane on the left is treated with antigen-specific peptide.

Product Modify	Phospho-Tyr210
Usage	For Research Use Only. Not for use in diagnostic or therapeutic procedures.