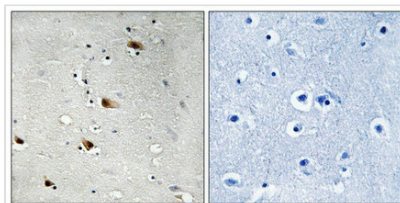




Phospho-TCF3 (Thr355) Antibody

Product Code	CSB-PA123008
Storage	Upon receipt, store at -20°C or -80°C. Avoid repeated freeze.
Uniprot No.	P15923
Immunogen	Peptide sequence around phosphorylation site of threonine 355 (P-S-T(p)-P-V) derived from Human E2A .
Raised In	Rabbit
Species Reactivity	Human,Mouse,Rat
Specificity	The antibody detects endogenous levels of E2A only when phosphorylated at threonine 355.
Tested Applications	ELISA,IHC;IHC:1:50-1:100
Form	Rabbit IgG in phosphate buffered saline (without Mg ²⁺ and Ca ²⁺), pH 7.4, 150mM NaCl, 0.02% sodium azide and 50% glycerol.
Purification Method	Antibodies were produced by immunizing rabbits with synthetic phosphopeptide and KLH conjugates. Antibodies were purified by affinity-chromatography using epitope-specific phosphopeptide. Non-phospho specific antibodies were removed by chromatography usi
Clonality	Polyclonal
Alias	E12; Tran; TCF3; TFE2; ITF1
Product Type	Polyclonal Antibody
Immunogen Species	Homo sapiens (Human)
Target Names	TCF3

Image



Immunohistochemical analysis of paraffin-embedded human brain tissue using E2A (Phospho-Thr355) antibody (left) or the same antibody preincubated with blocking peptide (right).

Product Modify	Phospho-Thr355
Usage	For Research Use Only. Not for use in diagnostic or therapeutic procedures.