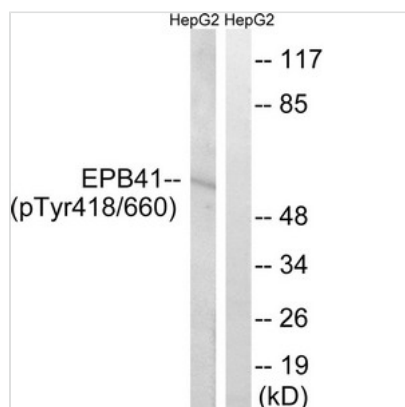




Phospho-EPB41 (Tyr660/418) Antibody

Product Code	CSB-PA242308
Storage	Upon receipt, store at -20°C or -80°C. Avoid repeated freeze.
Uniprot No.	P11171
Immunogen	Peptide sequence around phosphorylation site of tyrosine 660/418 (N-I-Y(p)-I-R) derived from Human EPB41.
Raised In	Rabbit
Species Reactivity	Human, Mouse
Specificity	The antibody detects endogenous levels of EPB41 only when phosphorylated at tyrosine 660/418.
Tested Applications	ELISA, WB; WB: 1:500-1:1000
Form	Rabbit IgG in phosphate buffered saline (without Mg ²⁺ and Ca ²⁺), pH 7.4, 150mM NaCl, 0.02% sodium azide and 50% glycerol.
Purification Method	Antibodies were produced by immunizing rabbits with synthetic phosphopeptide and KLH conjugates. Antibodies were purified by affinity-chromatography using epitope-specific phosphopeptide. Non-phospho specific antibodies were removed by chromatography
Clonality	Polyclonal
Alias	E41P; EPB4.1; band 4.1; P4.1;
Product Type	Polyclonal Antibody
Immunogen Species	Homo sapiens (Human)
Target Names	EPB41

Image



Western blot analysis of extracts from HepG2 cells treated with PMA using EPB41 (Phospho-Tyr660/418) Antibody. The lane on the right is treated with the antigen-specific peptide.

Product Modify	Phospho-Tyr660/418
Usage	For Research Use Only. Not for use in diagnostic or therapeutic procedures.