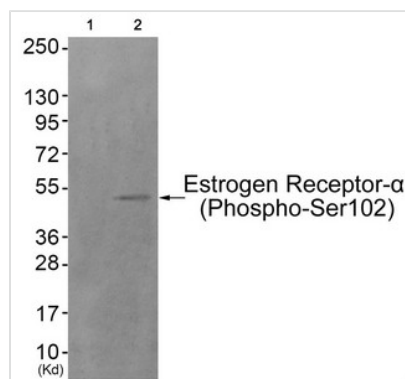




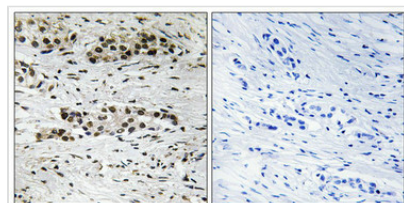
Phospho-ESR1 (Ser102) Antibody

Product Code	CSB-PA047787
Storage	Upon receipt, store at -20°C or -80°C. Avoid repeated freeze.
Uniprot No.	P03372
Immunogen	Peptide sequence around phosphorylation site of Serine102(L-N-S(p)-V-S) derived from Human Estrogen Receptor-α.
Raised In	Rabbit
Species Reactivity	Human,Mouse,Rat
Specificity	The antibody detects endogenous levels of Estrogen Receptor-α only when phosphorylated at serine 102.
Tested Applications	ELISA,WB,IHC;WB:1:500-1:1000,IHC:1:50-1:100
Form	Rabbit IgG in phosphate buffered saline (without Mg ²⁺ and Ca ²⁺), pH 7.4, 150mM NaCl, 0.02% sodium azide and 50% glycerol.
Purification Method	Antibodies were produced by immunizing rabbits with synthetic phosphopeptide and KLH conjugates. Antibodies were purified by affinity-chromatography using epitope-specific phosphopeptide. Non-phospho specific antibodies were removed by chromatography using
Clonality	Polyclonal
Alias	ER; ESR; ESR1; ESTR; NR3A1
Product Type	Polyclonal Antibody
Immunogen Species	Homo sapiens (Human)
Target Names	ESR1

Image



Western blot analysis of extracts from HuvEc cells (Lane 2), using Estrogen Receptor-α (Phospho-Ser102) Antibody. The lane on the left is treated with antigen-specific peptide.



Immunohistochemical analysis of paraffin-embedded human breast carcinoma tissue using Estrogen Receptor-α (Phospho-Ser102) antibody (left) or the same antibody preincubated with blocking peptide (right).



Product Modify**Phospho-Ser102**