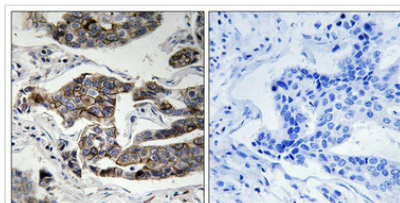




Phospho-CCDC88A (Ser1417) Antibody

Product Code	CSB-PA550459
Storage	Upon receipt, store at -20°C or -80°C. Avoid repeated freeze.
Uniprot No.	Q3V6T2
Immunogen	Peptide sequence around phosphorylation site of Serine 417(L-E-M(p)-A-Q) derived from Human Girdin .
Raised In	Rabbit
Species Reactivity	Human,Mouse
Specificity	The antibody detects endogenous levels of Girdin only when phosphorylated at serine 1417.
Tested Applications	ELISA,IHC;IHC:1:50-1:100
Form	Rabbit IgG in phosphate buffered saline (without Mg ²⁺ and Ca ²⁺), pH 7.4, 150mM NaCl, 0.02% sodium azide and 50% glycerol.
Purification Method	Antibodies were produced by immunizing rabbits with synthetic phosphopeptide and KLH conjugates. Antibodies were purified by affinity-chromatography using epitope-specific phosphopeptide. Non-phospho specific antibodies were removed by chromatography usi
Clonality	Polyclonal
Alias	APE; GIV; GRDN; HkRP1; KIAA1212
Product Type	Polyclonal Antibody
Immunogen Species	Homo sapiens (Human)
Target Names	CCDC88A

Image



Immunohistochemical analysis of paraffin-embedded human breast carcinoma tissue using Girdin (Phospho-Ser1417) antibody (left) or the same antibody preincubated with blocking peptide (right).

Product Modify	Phospho-Ser1417
Usage	For Research Use Only. Not for use in diagnostic or therapeutic procedures.