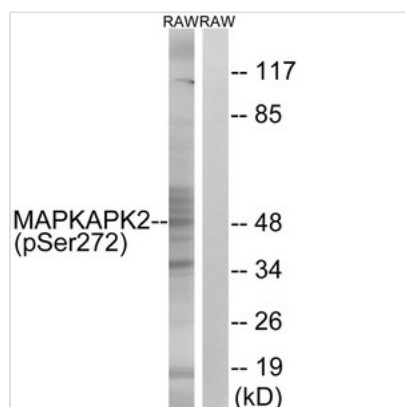




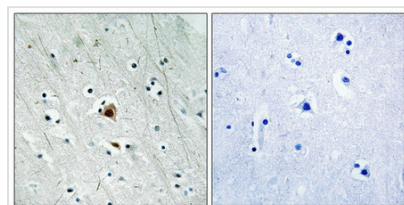
Phospho-MAPKAPK2 (Ser272) Antibody

Product Code	CSB-PA996185
Storage	Upon receipt, store at -20°C or -80°C. Avoid repeated freeze.
Uniprot No.	P49137
Immunogen	Peptide sequence around phosphorylation site of Serine 272(A-I-S(p)-P-G) derived from Human MAPKAPK2.
Raised In	Rabbit
Species Reactivity	Human,Mouse,Rat
Specificity	The antibody detects endogenous levels of MAPKAPK2 only when phosphorylated at serine 272.
Tested Applications	ELISA,WB,IHC;WB:1:500-1:1000,IHC:1:50-1:100
Form	Rabbit IgG in phosphate buffered saline (without Mg ²⁺ and Ca ²⁺), pH 7.4, 150mM NaCl, 0.02% sodium azide and 50% glycerol.
Purification Method	Antibodies were produced by immunizing rabbits with synthetic phosphopeptide and KLH conjugates. Antibodies were purified by affinity-chromatography using epitope-specific phosphopeptide. Non-phospho specific antibodies were removed by chromatography
Clonality	Polyclonal
Alias	MAPK2; MAPKAPK2; RPS6KC1;
Product Type	Polyclonal Antibody
Immunogen Species	Homo sapiens (Human)
Target Names	MAPKAPK2

Image



Western blot analysis of extracts from RAW264.7 cells treated with UV using MAPKAPK2 (Phospho-Ser272) Antibody. The lane on the right is treated with the antigen-specific peptide.



Immunohistochemical analysis of paraffin-embedded human brain tissue using MAPKAPK2 (Phospho-Ser272) antibody (left) or the same antibody preincubated with blocking peptide (right).



Product Modify**Phospho-Ser272**