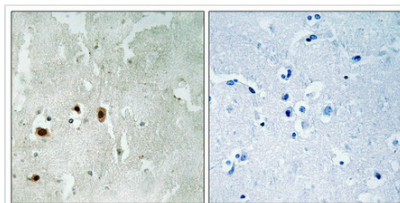




Phospho-KAT5 (Ser90) Antibody

Product Code	CSB-PA553592
Storage	Upon receipt, store at -20°C or -80°C. Avoid repeated freeze.
Uniprot No.	Q92993
Immunogen	Peptide sequence around phosphorylation site of Serine 90(P-G-S(p)-P-E) derived from Human Tip60.
Raised In	Rabbit
Species Reactivity	Human,Mouse,Rat
Specificity	The antibody detects endogenous levels of Tip60 only when phosphorylated at serine 90.
Tested Applications	ELISA,IHC;IHC:1:50-1:100
Form	Rabbit IgG in phosphate buffered saline (without Mg ²⁺ and Ca ²⁺), pH 7.4, 150mM NaCl, 0.02% sodium azide and 50% glycerol.
Purification Method	Antibodies were produced by immunizing rabbits with synthetic phosphopeptide and KLH conjugates. Antibodies were purified by affinity-chromatography using epitope-specific phosphopeptide. Non-phospho specific antibodies were removed by chromatography usi
Clonality	Polyclonal
Alias	HTATIP; TI60; Tat-interactive protein-60;
Product Type	Polyclonal Antibody
Immunogen Species	Homo sapiens (Human)
Target Names	KAT5

Image



Immunohistochemical analysis of paraffin-embedded human brain tissue using Tip60 (Phospho-Ser90) antibody (left) or the same antibody preincubated with blocking peptide (right).

Product Modify	Phospho-Ser90
Usage	For Research Use Only. Not for use in diagnostic or therapeutic procedures.