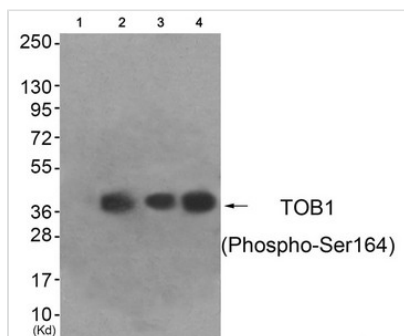




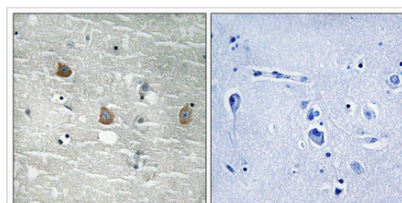
Phospho-TOB1 (Ser164) Antibody

| | |
|----------------------------|--|
| Product Code | CSB-PA957092 |
| Storage | Upon receipt, store at -20°C or -80°C. Avoid repeated freeze. |
| Uniprot No. | P50616 |
| Immunogen | Peptide sequence around phosphorylation site of Serine 164(A-V-S(p)-P-T) derived from Human TOB1. |
| Raised In | Rabbit |
| Species Reactivity | Human,Mouse,Rat |
| Specificity | The antibody detects endogenous levels of TOB1 only when phosphorylated at serine 164. |
| Tested Applications | ELISA,WB,IHC;WB:1:500-1:1000,IHC:1:50-1:100 |
| Form | Rabbit IgG in phosphate buffered saline (without Mg ²⁺ and Ca ²⁺), pH 7.4, 150mM NaCl, 0.02% sodium azide and 50% glycerol. |
| Purification Method | Antibodies were produced by immunizing rabbits with synthetic phosphopeptide and KLH conjugates. Antibodies were purified by affinity-chromatography using epitope-specific phosphopeptide. Non-phospho specific antibodies were removed by chromatography usi |
| Clonality | Polyclonal |
| Alias | TOB; Transducer of erbB-2 1; |
| Product Type | Polyclonal Antibody |
| Immunogen Species | Homo sapiens (Human) |
| Target Names | TOB1 |

Image



Western blot analysis of extracts from HeLa cells (Lane 2), A549 cells (Lane 3) and HepG2 cells (Lane 4), using TOB1 (Phospho-Ser164) Antibody. The lane on the left is treated with antigen-specific peptide.



Immunohistochemical analysis of paraffin-embedded human brain tissue using TOB1 (Phospho-Ser164) antibody (left) or the same antibody preincubated with blocking peptide (right).



Product Modify

Phospho-Ser164

Usage

For Research Use Only. Not for use in diagnostic or therapeutic procedures.