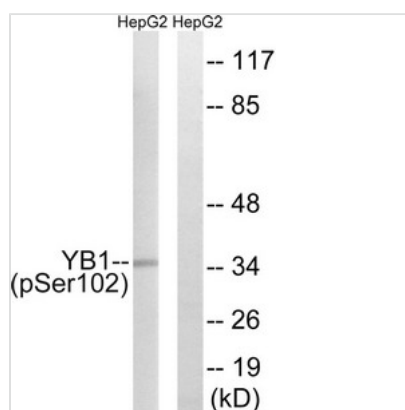




Phospho-YBX1 (Ser102) Antibody

Product Code	CSB-PA204680
Storage	Upon receipt, store at -20°C or -80°C. Liquid in PBS containing 50% glycerol, 0.5% BSA and 0.02% sodium azide.
Uniprot No.	P67809
Immunogen	Peptide sequence around phosphorylation site of Serine 102(L-R-S(p)-V-G) derived from Human YB1.
Raised In	Rabbit
Species Reactivity	Human, Mouse, Rat
Tested Applications	ELISA, WB; WB: 1:500-1:1000
Form	Liquid
Purification Method	Antibodies were produced by immunizing rabbits with synthetic phosphopeptide and KLH conjugates. Antibodies were purified by affinity-chromatography using epitope-specific phosphopeptide. Non-phospho specific antibodies were removed by chromatography use
Clonality	Polyclonal
Product Type	Polyclonal Antibody
Immunogen Species	Homo sapiens (Human)
Target Names	YBX1

Image



Western blot analysis of extracts from HepG2 cells treated with PMA using YB1 (Phospho-Ser102) Antibody. The lane on the right is treated with the antigen-specific peptide.

Usage

For Research Use Only. Not for use in diagnostic or therapeutic procedures.