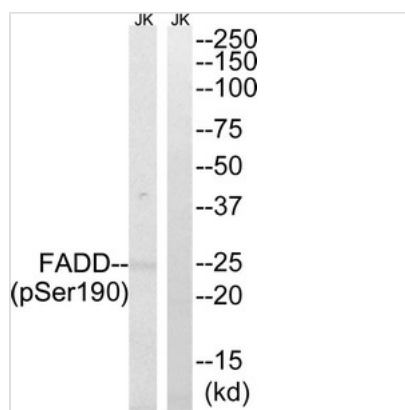




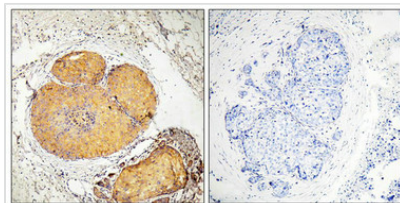
Phospho-FADD (Ser191) Antibody

Product Code	CSB-PA446731
Storage	Upon receipt, store at -20°C or -80°C. Avoid repeated freeze.
Uniprot No.	Q13158
Immunogen	Peptide sequence around phosphorylation site of Serine191(R-S-G(p)-A-M) derived from Human FADD.
Raised In	Rabbit
Species Reactivity	Human,Mouse
Specificity	The antibody detects endogenous levels of FADD only when phosphorylated at serine 191.
Tested Applications	ELISA,WB,IHC;WB:1:500-1:1000,IHC:1:50-1:100
Form	Rabbit IgG in phosphate buffered saline (without Mg ²⁺ and Ca ²⁺), pH 7.4, 150mM NaCl, 0.02% sodium azide and 50% glycerol.
Purification Method	Antibodies were produced by immunizing rabbits with synthetic phosphopeptide and KLH conjugates. Antibodies were purified by affinity-chromatography using epitope-specific phosphopeptide. Non-phospho specific antibodies were removed by chromatography usi
Clonality	Polyclonal
Alias	MORT1 ; FAS-associating death domain-containing protein; Mediator of receptor induced toxicity;
Product Type	Polyclonal Antibody
Immunogen Species	Homo sapiens (Human)
Target Names	FADD

Image



Western blot analysis of extracts from Jurkat cells treated with PMA using FADD (Phospho-Ser190) Antibody. The lane on the right is treated with the antigen-specific peptide.



Immunohistochemical analysis of paraffin-embedded human breast carcinoma tissue, using FADD (Phospho-Ser190) antibody (left) or the same antibody preincubated with blocking peptide (right).

Product Modify

Phospho-Ser191

Usage

For Research Use Only. Not for use in diagnostic or therapeutic procedures.