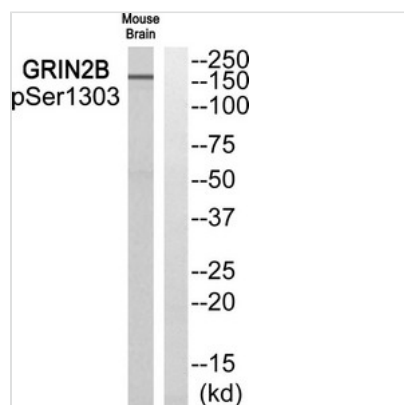




Phospho-GRIN2B (Ser1303) Antibody

Product Code	CSB-PA071137
Storage	Upon receipt, store at -20°C or -80°C. Avoid repeated freeze.
Uniprot No.	Q13224
Immunogen	Peptide sequence around phosphorylation site of Serine 1303(Q-H-S(p)-Y-D) derived from Human GRIN2B.
Raised In	Rabbit
Species Reactivity	Human,Mouse,Rat
Specificity	The antibody detects endogenous levels of GRIN2B only when phosphorylated at serine 1303.
Tested Applications	ELISA,WB;WB:1:500-1:1000
Form	Rabbit IgG in phosphate buffered saline (without Mg ²⁺ and Ca ²⁺), pH 7.4, 150mM NaCl, 0.02% sodium azide and 50% glycerol.
Purification Method	Antibodies were produced by immunizing rabbits with synthetic phosphopeptide and KLH conjugates. Antibodies were purified by affinity-chromatography using epitope-specific phosphopeptide. Non-phospho specific antibodies were removed by chromatography use
Clonality	Polyclonal
Alias	GRIN2B; NMDE2; NME2; NR2B; NR3
Product Type	Polyclonal Antibody
Immunogen Species	Homo sapiens (Human)
Target Names	GRIN2B

Image



Western blot analysis of extracts from Mouse brain cells using GRIN2B (Phospho-Ser1303) Antibody. The lane on the right is treated with the antigen-specific peptide.

Product Modify	Phospho-Ser1303
Usage	For Research Use Only. Not for use in diagnostic or therapeutic procedures.