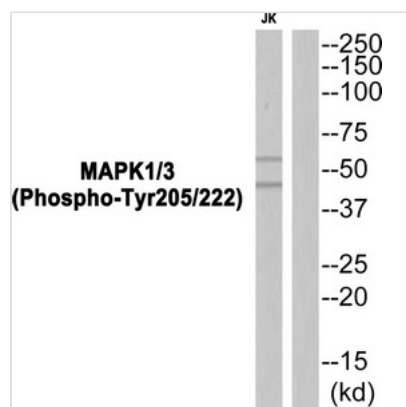




Phospho-MAPK3 (Tyr205/222) Antibody

Product Code	CSB-PA213371
Storage	Upon receipt, store at -20°C or -80°C. Avoid repeated freeze.
Uniprot No.	P28482
Immunogen	Peptide sequence around phosphorylation site of tyrosine 205/222(K-G-Y(p)-T-K) derived from Human MAPK1/3 .
Raised In	Rabbit
Species Reactivity	Human,Mouse,Rat
Specificity	The antibody detects endogenous levels of MAPK1/3 only when phosphorylated at tyrosine 205/222.
Tested Applications	ELISA,WB;WB:1:500-1:1000
Form	Rabbit IgG in phosphate buffered saline (without Mg ²⁺ and Ca ²⁺), pH 7.4, 150mM NaCl, 0.02% sodium azide and 50% glycerol.
Purification Method	Antibodies were produced by immunizing rabbits with synthetic phosphopeptide and KLH conjugates. Antibodies were purified by affinity-chromatography using epitope-specific phosphopeptide. Non-phospho specific antibodies were removed by chromatography usi
Clonality	Polyclonal
Alias	ERK; ERT1; MAPK 1; MAPK2; ERK2
Product Type	Polyclonal Antibody
Immunogen Species	Homo sapiens (Human)
Target Names	MAPK1/MAPK3

Image



Western blot analysis of extracts from JK cells using MAPK1/3 (Phospho-Tyr205/222) Antibody. The lane on the right is treated with the antigen-specific peptide.

Product Modify	Phospho-Tyr205/222
Usage	For Research Use Only. Not for use in diagnostic or therapeutic procedures.