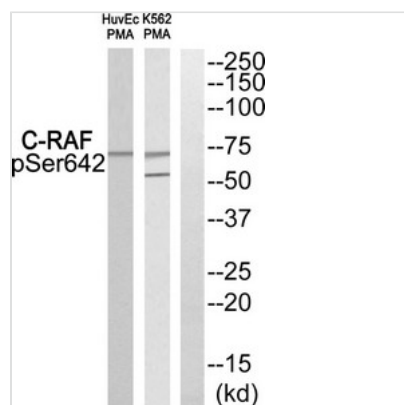




Phospho-RAF1 (Ser642) Antibody

Product Code	CSB-PA148049
Storage	Upon receipt, store at -20°C or -80°C. Avoid repeated freeze.
Uniprot No.	P04049
Immunogen	Peptide sequence around phosphorylation site of Serine 642(T-T-S(p)-P-R) derived from Human C-RAF.
Raised In	Rabbit
Species Reactivity	Human,Mouse,Rat
Specificity	The antibody detects endogenous levels of C-RAF only when phosphorylated at serine 642.
Tested Applications	ELISA,WB;WB:1:500-1:1000
Form	Rabbit IgG in phosphate buffered saline (without Mg ²⁺ and Ca ²⁺), pH 7.4, 150mM NaCl, 0.02% sodium azide and 50% glycerol.
Purification Method	Antibodies were produced by immunizing rabbits with synthetic phosphopeptide and KLH conjugates. Antibodies were purified by affinity-chromatography using epitope-specific phosphopeptide. Non-phospho specific antibodies were removed by chromatography usi
Clonality	Polyclonal
Alias	C-RAF; C-Raf; CRAF; RAF-1;
Product Type	Polyclonal Antibody
Immunogen Species	Homo sapiens (Human)
Target Names	RAF1

Image



Western blot analysis of extracts from HuvEc cells and K562 cells treated with PMA using C-RAF (Phospho-Ser642) Antibody. The lane on the right is treated with the antigen-specific peptide.

Product Modify	Phospho-Ser642
Usage	For Research Use Only. Not for use in diagnostic or therapeutic procedures.