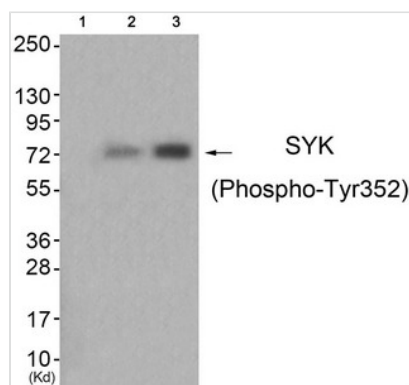




# Phospho-SYK (Tyr352) Antibody

<b>Product Code</b>	CSB-PA556441
<b>Storage</b>	Upon receipt, store at -20°C or -80°C. Avoid repeated freeze.
<b>Uniprot No.</b>	P43405
<b>Immunogen</b>	Peptide sequence around phosphorylation site of tyrosine 352(S-P-Y(p)-A-D) derived from Human SYK.
<b>Raised In</b>	Rabbit
<b>Species Reactivity</b>	Human,Mouse,Rat
<b>Specificity</b>	The antibody detects endogenous levels of SYK only when phosphorylated at tyrosine 352.
<b>Tested Applications</b>	ELISA,WB;WB:1:500-1:1000
<b>Form</b>	Rabbit IgG in phosphate buffered saline (without Mg <sup>2+</sup> and Ca <sup>2+</sup> ), pH 7.4, 150mM NaCl, 0.02% sodium azide and 50% glycerol.
<b>Purification Method</b>	Antibodies were produced by immunizing rabbits with synthetic phosphopeptide and KLH conjugates. Antibodies were purified by affinity-chromatography using epitope-specific phosphopeptide. Non-phospho specific antibodies were removed by chromatography
<b>Clonality</b>	Polyclonal
<b>Alias</b>	SYK; KSYK; FLJ25043; FLJ37489;
<b>Product Type</b>	Polyclonal Antibody
<b>Immunogen Species</b>	Homo sapiens (Human)
<b>Target Names</b>	SYK

## Image



Western blot analysis of extracts from HuvEc cells (Lane 2) and HepG2 cells (Lane 3), using SYK (Phospho-Tyr352) Antibody. The lane on the left is treated with antigen-specific peptide.

<b>Product Modify</b>	Phospho-Tyr352
<b>Usage</b>	For Research Use Only. Not for use in diagnostic or therapeutic procedures.