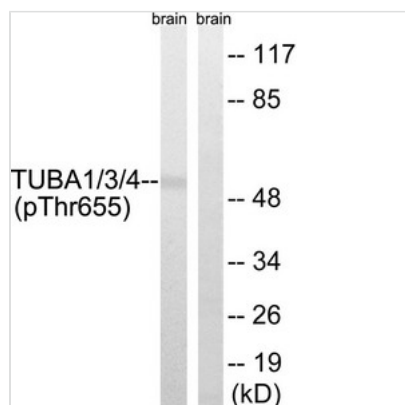




# Phospho-TUBA1A/TUBA1B/TUBA1C/TUBA3C/TUBA3E/TUBA4A (Tyr272) Antibody

<b>Product Code</b>	CSB-PA289123
<b>Storage</b>	Upon receipt, store at -20°C or -80°C. Avoid repeated freeze.
<b>Uniprot No.</b>	Q71U36
<b>Immunogen</b>	Peptide sequence around phosphorylation site of tyrosine 272 (A-T-Y(p)-A-P) derived from Human TUBA1/3/4.
<b>Raised In</b>	Rabbit
<b>Species Reactivity</b>	Human,Mouse,Rat
<b>Specificity</b>	The antibody detects endogenous levels of TUBA1/3/4 only when phosphorylated at tyrosine 272.
<b>Tested Applications</b>	ELISA,WB;WB:1:500-1:1000
<b>Form</b>	Rabbit IgG in phosphate buffered saline (without Mg <sup>2+</sup> and Ca <sup>2+</sup> ), pH 7.4, 150mM NaCl, 0.02% sodium azide and 50% glycerol.
<b>Purification Method</b>	Antibodies were produced by immunizing rabbits with synthetic phosphopeptide and KLH conjugates. Antibodies were purified by affinity-chromatography using epitope-specific phosphopeptide. Non-phospho specific antibodies were removed by chromatography
<b>Clonality</b>	Polyclonal
<b>Alias</b>	TBA1; TBA1A; TBA4A; TUBA1;
<b>Product Type</b>	Polyclonal Antibody
<b>Immunogen Species</b>	Homo sapiens (Human)
<b>Target Names</b>	TUBA1A/TUBA1B/TUBA1C/TUBA3C/TUBA3E

## Image



Western blot analysis of extracts from Rat brain cells using TUBA1/3/4 (Phospho-Tyr272) Antibody. The lane on the right is treated with the antigen-specific peptide.

**Product Modify** Phospho-Tyr272

**Usage**

For Research Use Only. Not for use in diagnostic or therapeutic procedures.