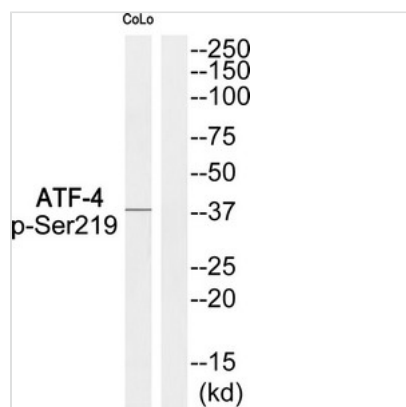




Phospho-ATF4 (Ser219) Antibody

Product Code	CSB-PA172388
Storage	Upon receipt, store at -20°C or -80°C. Avoid repeated freeze.
Uniprot No.	P18848
Immunogen	Peptide sequence around phosphorylation site of Serine 219 (N-D-S(p)-G-T) derived from Human ATF-4.
Raised In	Rabbit
Species Reactivity	Human, Mouse
Specificity	The Antibody detects endogenous levels of ATF-4 only when phosphorylated at Serine 219.
Tested Applications	ELISA, WB; WB: 1:500-1:1000
Form	Rabbit IgG in phosphate buffered saline (without Mg ²⁺ and Ca ²⁺), pH 7.4, 150mM NaCl, 0.02% sodium azide and 50% glycerol.
Purification Method	Antibodies were produced by immunizing rabbits with synthetic phosphopeptide and KLH conjugates. Antibodies were purified by affinity-chromatography using epitope-specific phosphopeptide. Non-phospho specific antibodies were removed by chromatography use
Clonality	Polyclonal
Alias	ATF4; CREB-2; DNA-binding protein TAXREB67; TXREB;
Product Type	Polyclonal Antibody
Immunogen Species	Homo sapiens (Human)
Target Names	ATF4

Image



Western blot analysis of extracts from COLO cells using ATF-4 (Phospho-Ser219) Antibody. The lane on the right is treated with the antigen-specific peptide.

Product Modify	Phospho-Ser219
Usage	For Research Use Only. Not for use in diagnostic or therapeutic procedures.