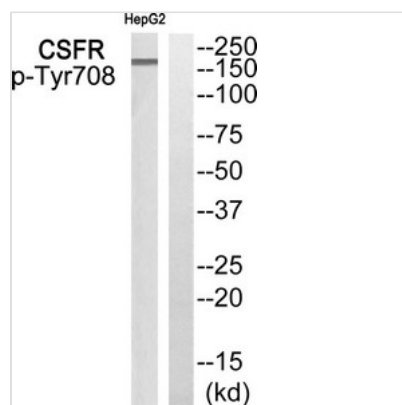




Phospho-CSF1R (Tyr708) Antibody

Product Code	CSB-PA202220
Storage	Upon receipt, store at -20°C or -80°C. Avoid repeated freeze.
Uniprot No.	P07333
Immunogen	Peptide sequence around phosphorylation site of tyrosine 708 (K-K-Y(p)-V-R) derived from Human CSFR .
Raised In	Rabbit
Species Reactivity	Human,Mouse,Rat
Specificity	The Antibody detects endogenous levels of CSF1R only when phosphorylated at tyrosine 708.
Tested Applications	ELISA,WB;WB:1:500-1:1000
Form	Rabbit IgG in phosphate buffered saline (without Mg ²⁺ and Ca ²⁺), pH 7.4, 150mM NaCl, 0.02% sodium azide and 50% glycerol.
Purification Method	Antibodies were produced by immunizing rabbits with synthetic phosphopeptide and KLH conjugates. Antibodies were purified by affinity-chromatography using epitope-specific phosphopeptide. Non-phospho specific antibodies were removed by chromatography usi
Clonality	Polyclonal
Alias	C-FMS; CD115; CSF1R; FIM2; FMS
Product Type	Polyclonal Antibody
Immunogen Species	Homo sapiens (Human)
Target Names	CSF1R

Image



Western blot analysis of extracts from HepG2 cells using CSFR (Phospho-Tyr708) Antibody. The lane on the right is treated with the antigen-specific peptide.

Product Modify	Phospho-Tyr708
Usage	For Research Use Only. Not for use in diagnostic or therapeutic procedures.