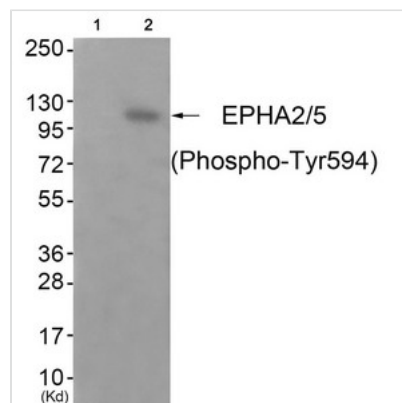




Phospho-EPHA2/EPHA5 (Tyr594) Antibody

Product Code	CSB-PA584934
Storage	Upon receipt, store at -20°C or -80°C. Avoid repeated freeze.
Uniprot No.	P29317
Immunogen	Peptide sequence around phosphorylation site of tyrosine 594 (H-T-Y(p)-E-D) derived from Human EPHA2/5.
Raised In	Rabbit
Species Reactivity	Human, Mouse
Specificity	The Antibody detects endogenous levels of EPHA2 only when phosphorylated at tyrosine 594.
Tested Applications	ELISA, WB; WB: 1:500-1:1000
Form	Rabbit IgG in phosphate buffered saline (without Mg ²⁺ and Ca ²⁺), pH 7.4, 150mM NaCl, 0.02% sodium azide and 50% glycerol.
Purification Method	Antibodies were produced by immunizing rabbits with synthetic phosphopeptide and KLH conjugates. Antibodies were purified by affinity-chromatography using epitope-specific phosphopeptide. Non-phospho specific antibodies were removed by chromatography
Clonality	Polyclonal
Alias	ARCC2; ECK; EPHA2;
Product Type	Polyclonal Antibody
Immunogen Species	Homo sapiens (Human)
Target Names	EPHA2/EPHA5

Image



Western blot analysis of extracts from JK cells (Lane 2), using EPHA2/5 (Phospho-Tyr594) Antibody. The lane on the left is treated with antigen-specific peptide.

Product Modify	Phospho-Tyr594
Usage	For Research Use Only. Not for use in diagnostic or therapeutic procedures.