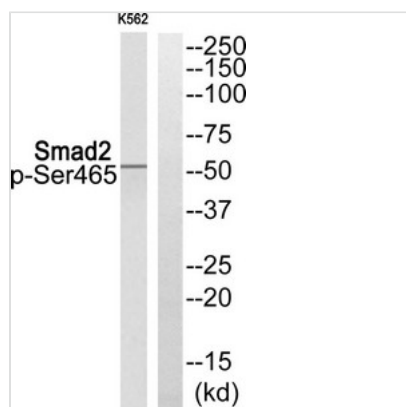




Phospho-SMAD2 (Ser465) Antibody

Product Code	CSB-PA139936
Storage	Upon receipt, store at -20°C or -80°C. Avoid repeated freeze.
Uniprot No.	Q15796
Immunogen	Peptide sequence around phosphorylation site of Serine 465(C-S-S(p)-M-S) derived from Human Smad2.
Raised In	Rabbit
Species Reactivity	Human,Mouse,Rat
Specificity	The antibody detects endogenous levels of Smad2 only when phosphorylated at serine 465.
Tested Applications	ELISA,WB;WB:1:500-1:1000
Form	Rabbit IgG in phosphate buffered saline (without Mg ²⁺ and Ca ²⁺), pH 7.4, 150mM NaCl, 0.02% sodium azide and 50% glycerol.
Purification Method	Antibodies were produced by immunizing rabbits with synthetic phosphopeptide and KLH conjugates. Antibodies were purified by affinity-chromatography using epitope-specific phosphopeptide. Non-phospho specific antibodies were removed by chromatography usi
Clonality	Polyclonal
Alias	hMAD-2; JV18; JV18-1; MAD; hSMAD2
Product Type	Polyclonal Antibody
Immunogen Species	Homo sapiens (Human)
Target Names	SMAD2

Image



Western blot analysis of extracts from K562 cells using Smad2 (Phospho-Ser465) Antibody. The lane on the right is treated with the antigen-specific peptide.

Product Modify	Phospho-Ser465
Usage	For Research Use Only. Not for use in diagnostic or therapeutic procedures.