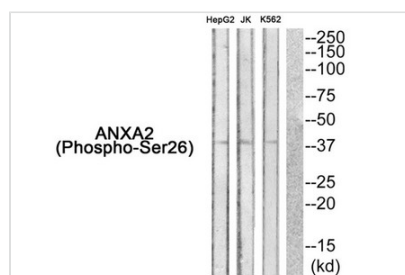




Phospho-ANXA2 (Ser26) Antibody

Product Code	CSB-PA548570
Storage	Upon receipt, store at -20°C or -80°C. Avoid repeated freeze.
Uniprot No.	P07355
Immunogen	Peptide sequence around phosphorylation site of Serine 26 (Y-G-S(p)-V-K) derived from Human ANXA2.
Raised In	Rabbit
Species Reactivity	Human,Mouse,Rat
Specificity	The antibody detects endogenous levels of ANXA2 only when phosphorylated at serine 26.
Tested Applications	ELISA,WB;WB:1:500-1:1000
Form	Rabbit IgG in phosphate buffered saline (without Mg ²⁺ and Ca ²⁺), pH 7.4, 150mM NaCl, 0.02% sodium azide and 50% glycerol.
Purification Method	Antibodies were produced by immunizing rabbits with synthetic phosphopeptide and KLH conjugates. Antibodies were purified by affinity-chromatography using epitope-specific phosphopeptide. Non-phospho specific antibodies were removed by chromatography usi
Clonality	Polyclonal
Alias	Annexin A2; Annexin II; Annexin-2; CAL1H; Calpactin I heavy chain
Product Type	Polyclonal Antibody
Immunogen Species	Homo sapiens (Human)
Target Names	ANXA2

Image



Western blot analysis of extracts from HepG2 cells JK cells and K562 cells using ANXA2 (Phospho-Ser26) Antibody. The lane on the right is treated with the antigen-specific peptide.

Product Modify	Phospho-Ser26
Usage	For Research Use Only. Not for use in diagnostic or therapeutic procedures.