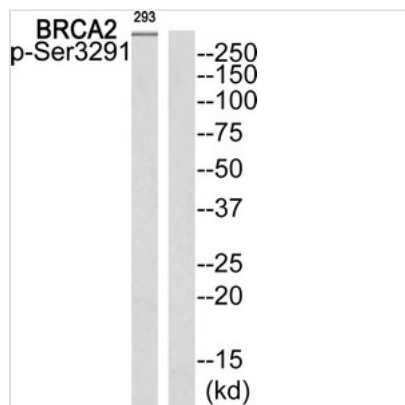




Phospho-BRCA2 (Ser3291) Antibody

Product Code	CSB-PA079435
Storage	Upon receipt, store at -20°C or -80°C. Avoid repeated freeze.
Uniprot No.	P51587
Immunogen	Peptide sequence around phosphorylation site of Serine 3291 (F-V-S(p)-P-A) derived from Human BRCA2.
Raised In	Rabbit
Species Reactivity	Human,Mouse,Rat
Specificity	The antibody detects endogenous levels of BRCA2 only when phosphorylated at serine 3291.
Tested Applications	ELISA,WB;WB:1:500-1:1000
Form	Rabbit IgG in phosphate buffered saline (without Mg ²⁺ and Ca ²⁺), pH 7.4, 150mM NaCl, 0.02% sodium azide and 50% glycerol.
Purification Method	Antibodies were produced by immunizing rabbits with synthetic phosphopeptide and KLH conjugates. Antibodies were purified by affinity-chromatography using epitope-specific phosphopeptide. Non-phospho specific antibodies were removed by chromatography use
Clonality	Polyclonal
Alias	BRCC2; BRCA2; subunit 2; BRCA1/BRCA2-containing complex;
Product Type	Polyclonal Antibody
Immunogen Species	Homo sapiens (Human)
Target Names	BRCA2

Image



Western blot analysis of extracts from 293 cells using BRCA2 (Phospho-Ser3291) Antibody. The lane on the right is treated with the antigen-specific peptide.

Product Modify	Phospho-Ser3291
Usage	For Research Use Only. Not for use in diagnostic or therapeutic procedures.