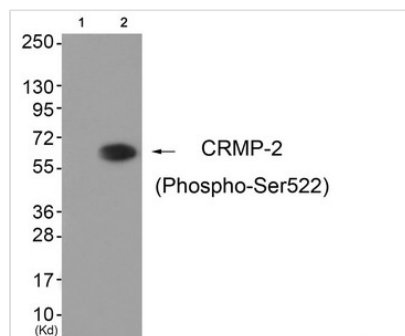




Phospho-DPYSL2 (Ser522) Antibody

Product Code	CSB-PA088532
Storage	Upon receipt, store at -20°C or -80°C. Avoid repeated freeze.
Uniprot No.	Q16555
Immunogen	Peptide sequence around phosphorylation site of Serine 522(K-T-S(p)-P-A) derived from Human CRMP-2.
Raised In	Rabbit
Species Reactivity	Human,Mouse,Rat
Specificity	The antibody detects endogenous levels of DPYSL2 only when phosphorylated at serine 522.
Tested Applications	ELISA,WB;WB:1:500-1:1000
Form	Rabbit IgG in phosphate buffered saline (without Mg ²⁺ and Ca ²⁺), pH 7.4, 150mM NaCl, 0.02% sodium azide and 50% glycerol.
Purification Method	Antibodies were produced by immunizing rabbits with synthetic phosphopeptide and KLH conjugates. Antibodies were purified by affinity-chromatography using epitope-specific phosphopeptide. Non-phospho specific antibodies were removed by chromatography using
Clonality	Polyclonal
Alias	CRMP2; DPYL2; DRP2; ULIP-2;
Product Type	Polyclonal Antibody
Immunogen Species	Homo sapiens (Human)
Target Names	DPYSL2

Image



Western blot analysis of extracts from HuvEc cells (Lane 2), using CRMP-2 (Phospho-Ser522) Antibody. The lane on the left is treated with antigen-specific peptide.

Product Modify Phospho-Ser522